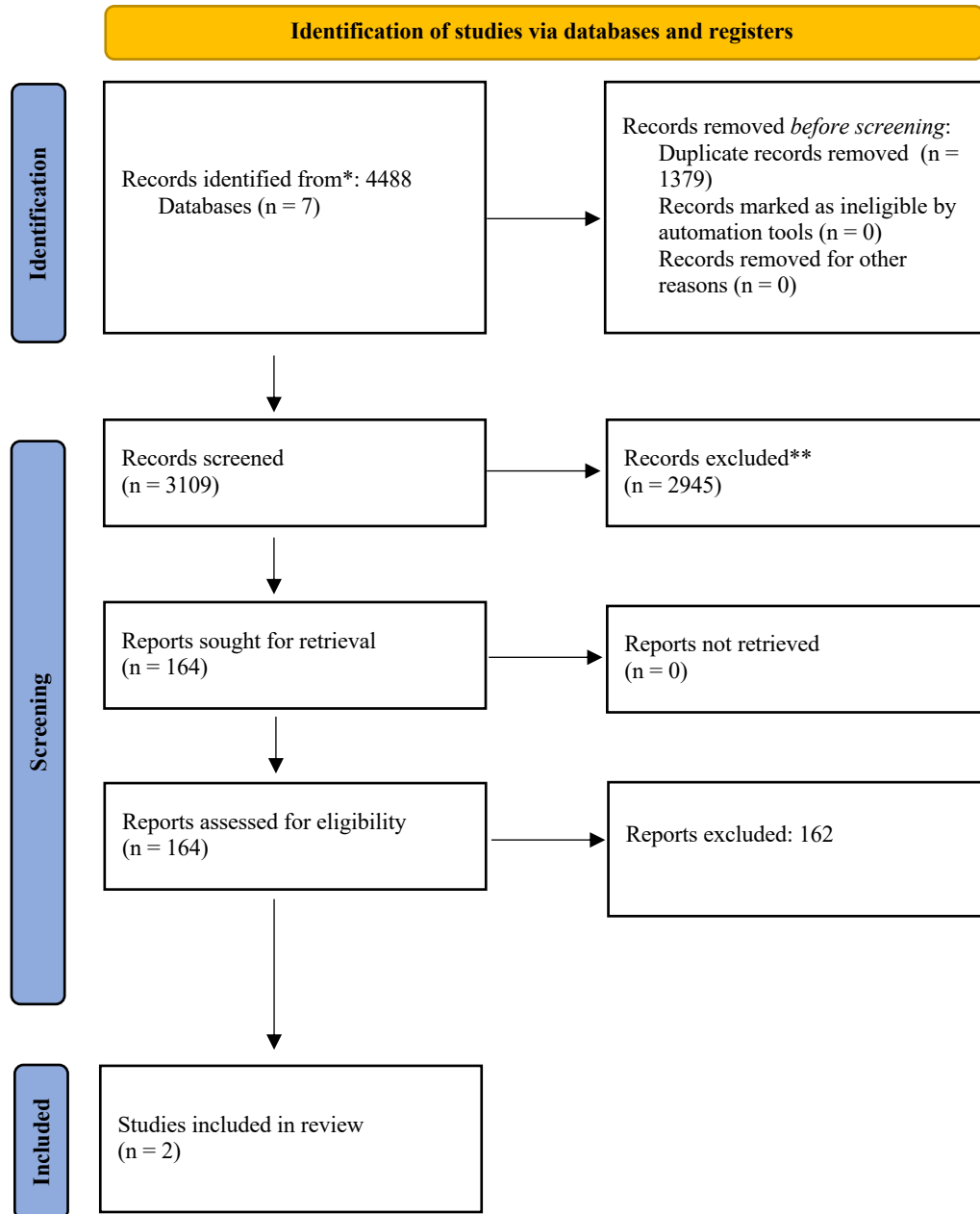


## ELECTRONIC SUPPLEMENTARY ONLINE MATERIALS II

### PRISMA 2020 flow diagram



## Rechercheprotokoll (research protocol):

---

### **Nach NICE: Evidence review: Gender-affirming hormones for children and adolescents with gender dysphoria**

Ovid MEDLINE

+Daily Updates

+Epub

+In-Process

Embase

Cochrane

PsycINFO

---

Ovid MEDLINE(R) <2019 to August Week 5 2023>, 07.09.2023

1	Gender Dysphoria/	593
2	Gender Identity/	4381
3	"Sexual and Gender Disorders"/	7
4	Transsexualism/	1024
5	Transgender Persons/	4310
6	Health Services for Transgender Persons/	85
7	exp Sex Reassignment Procedures/	717
8	(gender* adj3 (dysphori* or incongru* or identi* or disorder* or confus* or minorit* or queer*)).tw.	5355
9	(transgend* or transex* or transsex* or transfem* or transwom* or transma* or transmen* or transperson* or transpeopl*).tw.	7971
10	(trans or crossgender* or cross-gender* or crossex* or cross-sex* or genderqueer*).tw.	19132
11	((sex or gender*) adj3 (reassign* or chang* or transform* or transition*)).tw.	2438
12	(male-to-female or m2f or female-to-male or f2m).tw.	30598

13 or/1-12 63228  
14 exp Infant/ or Infant Health/ or Infant Welfare/ 149805  
15 (premat\* or pre-matur\* or preterm\* or pre-term\* or infan\* or newborn\* or new-born\* or perinat\* or  
16 peri-nat\* or neonat\* or neo-nat\* or baby\* or babies or toddler\*).ti,ab,in,jn. 181641  
17 exp Child/ or exp Child Behavior/ or Child Health/ or Child Welfare/ 314770  
18 Minors/ 302  
19 (child\* or minor or minors or boy\* or girl\* or kid or kids or young\*).ti,ab,in,jn.661469  
20 exp pediatrics/ 7031  
21 (pediatric\* or paediatric\* or peadiatric\*).ti,ab,in,jn. 308029  
22 Adolescent/ or Adolescent Behavior/ or Adolescent Health/ 267013  
23 Puberty/ 1322  
24 (adolescent\* or pubescen\* or prepubescen\* or pre-pubescen\* or pubert\* or prepubert\* or pre-pubert\* or  
25 teen\* or preteen\* or pre-teen\* or juvenil\* or youth\* or under\*age\*).ti,ab,in,jn. 139746  
26 Schools/ 16086  
27 Child Day Care Centers/ or exp Nurseries/ or Schools, Nursery/ 495  
28 (pre-school\* or preschool\* or kindergar\* or daycare or day-care or nurser\* or school\* or pupil\* or  
29 student\*).ti,ab,jn. 131586  
30 (("eight" or "nine" or "ten" or "eleven" or "twelve" or "thirteen" or "fourteen" or "fifteen" or "sixteen" or  
31 "seventeen" or "eighteen" or "nineteen") adj2 (year or years or age or ages or aged)).ti,ab. 15904  
32 (("8" or "9" or "10" or "11" or "12" or "13" or "14" or "15" or "16" or "17" or "18" or "19") adj2 (year or  
33 years or age or ages or aged)).ti,ab. 262854  
34 or/14-28 1153774  
35 13 and 29 22871  
36 (transchild\* or transyouth\* or transteen\* or transadoles\* or transgirl\* or transboy\*).tw. 7  
37 30 or 31 22872  
38 Hormones/ad, tu, th 415  
39 exp Progesterone/ad, tu, th 678  
40 exp Estrogens/ad, tu, th 1405  
41 exp Gonadal Steroid Hormones/ad, tu, th 2461  
42 (progesteron\* or oestrogen\* or estrogen\*).tw. 24135  
43 ((cross-sex or crosssex or gender-affirm\*) and (hormon\* or steroid\* or therap\* or treatment\* or prescri\*  
44 or pharm\* or medici\* or drug\* or intervention\* or care)).tw. 1251  
45 exp Estradiol/ad, tu, th 745  
46 exp Testosterone/ad, tu, th 843  
47 (testosteron\* or sustanon\* or tostran or testogel or testim or restandol or andriol or testocaps\* or nebido  
48 or testavan).tw. 10759  
49 (oestrad\* or estrad\* or evorel or ethinyloestrad\* or ethinylestrad\* or elleste or progynova or zumenon or  
50 bedol or femseven or nuvelle).tw. 9431  
51 or/33-42 38522  
52 32 and 43 1151  
53 limit 44 to yr="2000 -Current" 1151  
54 animals/ not humans/ 547663  
55 45 not 46 958  
56 limit 47 to english language 946  
57 (MEDLINE or pubmed).tw. 122451  
58 systematic review.tw. 114805  
59 systematic review.pt. 118164  
60 meta-analysis.pt. 82669  
61 intervention\$.ti. 54689  
62 or/49-53 233262  
63 randomized controlled trial.pt. 110092  
64 randomi?ed.mp. 219283  
65 placebo.mp. 39052  
66 or/55-57 226642  
67 exp cohort studies/ or exp epidemiologic studies/ or exp clinical trial/ or exp evaluation studies as topic/  
68 or exp statistics as topic/ 1326569  
69 ((control and (group\* or study)) or (time and factors)).mp. 661613

61 (program or survey\* or ci or cohort or comparative stud\* or evaluation studies or follow-up\*).mp.  
1038470  
62 or/59-61 1984739  
63 Observational Studies as Topic/ 4800  
64 Observational Study/ 79469  
65 Epidemiologic Studies/ 1295  
66 exp Case-Control Studies/429139  
67 exp Cohort Studies/ 624925  
68 Cross-Sectional Studies/ 173857  
69 Controlled Before-After Studies/ 307  
70 Historically Controlled Study/ 70  
71 Interrupted Time Series Analysis/ 1238  
72 Comparative Study.pt. 75657  
73 case control\$.tw. 34160  
74 case series.tw. 28415  
75 (cohort adj (study or studies)).tw. 123442  
76 cohort analy\$.tw.4276  
77 (follow up adj (study or studies)).tw. 8120  
78 (observational adj (study or studies)).tw. 57110  
79 longitudinal.tw. 85769  
80 prospective.tw. 162894  
81 retrospective.tw. 228139  
82 cross sectional.tw. 164250  
83 or/63-82982746  
84 54 or 58 or 62 or 83 2147927  
85 48 and 84 540  
86 limit 85 to (letter or historical article or comment or editorial or news or case reports) 24  
87 85 not 86 516  
88 limit 87 to yr="2020 - 2023" 431

Ovid MEDLINE(R) Epub Ahead of Print <September 06, 2023> 07.09.2023

1 Gender Dysphoria/ 0  
2 Gender Identity/ 0  
3 "Sexual and Gender Disorders"/ 0  
4 Transsexualism/ 0  
5 Transgender Persons/ 0  
6 Health Services for Transgender Persons/ 0  
7 exp Sex Reassignment Procedures/ 0  
8 (gender\* adj3 (dysphori\* or incongru\* or identi\* or disorder\* or confus\* or minorit\* or queer\*)).tw.  
513  
9 (transgend\* or transex\* or transsex\* or transfem\* or transwom\* or transma\* or transmen\* or  
transperson\* or transpeopl\*).tw. 640  
10 (trans or crossgender\* or cross-gender\* or crossex\* or cross-sex\* or genderqueer\*).tw. 1199  
11 ((sex or gender\*) adj3 (reassign\* or chang\* or transform\* or transition\*)).tw. 140  
12 (male-to-female or m2f or female-to-male or f2m).tw. 2158  
13 or/1-12 4297  
14 exp Infant/ or Infant Health/ or Infant Welfare/ 0  
15 (prematu\* or pre-matur\* or preterm\* or pre-term\* or infan\* or newborn\* or new-born\* or perinat\* or  
peri-nat\* or neonat\* or neo-nat\* or baby\* or babies or toddler\*).ti,ab,in,jn. 13460  
16 exp Child/ or exp Child Behavior/ or Child Health/ or Child Welfare/ 0  
17 Minors/ 0  
18 (child\* or minor or minors or boy\* or girl\* or kid or kids or young\*).ti,ab,in,jn.44866  
19 exp pediatrics/ 0  
20 (pediatric\* or paediatric\* or peadiatric\*).ti,ab,in,jn. 19407  
21 Adolescent/ or Adolescent Behavior/ or Adolescent Health/ 0

22 Puberty/ 0  
 23 (adolescen\* or pubescen\* or prepubescen\* or pre-pubescen\* or pubert\* or prepubert\* or pre-pubert\* or  
 24 teen\* or preteen\* or pre-teen\* or juvenil\* or youth\* or under\*age\*).ti,ab,in,jn. 10820  
 25 Schools/0  
 26 Child Day Care Centers/ or exp Nurseries, Infant/ or Schools, Nursery/ 0  
 27 (pre-school\* or preschool\* or kindergar\* or daycare or day-care or nurser\* or school\* or pupil\* or  
 28 student\*).ti,ab,jn. 11565  
 29 ("eight" or "nine" or "ten" or "eleven" or "twelve" or "thirteen" or "fourteen" or "fifteen" or "sixteen" or  
 30 "seventeen" or "eighteen" or "nineteen") adj2 (year or years or age or ages or aged).ti,ab. 1259  
 31 ("8" or "9" or "10" or "11" or "12" or "13" or "14" or "15" or "16" or "17" or "18" or "19") adj2 (year or  
 32 years or age or ages or aged).ti,ab. 17467  
 33 or/14-2875639  
 34 13 and 29 1450  
 35 (transchild\* or transyouth\* or transteen\* or transadoles\* or transgirl\* or transboy\*).tw. 0  
 36 30 or 31 1450  
 37 Hormones/ad, tu, th 0  
 38 exp Progesterone/ad, tu, th 0  
 39 exp Estrogens/ad, tu, th 0  
 40 exp Gonadal Steroid Hormones/ad, tu, th 0  
 41 (progesteron\* or oestrogen\* or estrogen\*).tw. 1274  
 42 ((cross-sex or crosssex or gender-affirm\*) and (hormon\* or steroid\* or therap\* or treatment\* or prescri\*  
 43 or pharm\* or medici\* or drug\* or intervention\* or care)).tw. 127  
 44 exp Estradiol/ad, tu, th 0  
 45 exp Testosterone/ad, tu, th0  
 46 (testosteron\* or sustanon\* or tostran or testogel or testim or restandol or andriol or testocaps\* or nebido  
 47 or testavan).tw. 657  
 48 (oestrad\* or estrad\* or evorel or ethinyloestrad\* or ethinylestrad\* or elleste or progynova or zumenon or  
 49 bedol or femseven or nuvelle).tw. 447  
 50 or/33-422083  
 51 32 and 43 73  
 52 limit 44 to yr="2000 -Current" 69  
 53 animals/ not humans/ 0  
 54 45 not 46 69  
 55 limit 47 to english language 69  
 56 (MEDLINE or pubmed).tw. 8394  
 57 systematic review.tw. 8484  
 58 systematic review.pt. 206  
 59 meta-analysis.pt. 72  
 60 intervention\$.ti. 3542  
 61 or/49-53 15093  
 62 randomized controlled trial.pt. 1  
 63 randomi?ed.mp. 12000  
 64 placebo.mp. 2369  
 65 or/55-57 12764  
 66 exp cohort studies/ or exp epidemiologic studies/ or exp clinical trial/ or exp evaluation studies as topic/  
 67 or exp statistics as topic/ 42  
 68 ((control and (group\* or study)) or (time and factors)).mp. 27011  
 69 (program or survey\* or ci or cohort or comparative stud\* or evaluation studies or follow-up\*).mp.  
 59854  
 or/59-61 78430  
 Observational Studies as Topic/ 0  
 Observational Study/ 1  
 Epidemiologic Studies/ 0  
 exp Case-Control Studies/0  
 exp Cohort Studies/ 0  
 Cross-Sectional Studies/ 0  
 Controlled Before-After Studies/ 0

70 Historically Controlled Study/ 0  
 71 Interrupted Time Series Analysis/ 0  
 72 Comparative Study.pt. 0  
 73 case control\$.tw. 1888  
 74 case series.tw. 2050  
 75 (cohort adj (study or studies)).tw. 8021  
 76 cohort analy\$.tw.328  
 77 (follow up adj (study or studies)).tw. 491  
 78 (observational adj (study or studies)).tw. 3736  
 79 longitudinal.tw. 6186  
 80 prospective.tw. 10326  
 81 retrospective.tw. 16115  
 82 cross sectional.tw. 9398  
 83 or/63-8244437  
 84 54 or 58 or 62 or 83 106364  
 85 48 and 84 31  
 86 limit 85 to (letter or historical article or comment or editorial or news or case reports) 0  
 87 85 not 86 31  
 88 limit 87 to yr="2020 - 2023" 29

Ovid MEDLINE(R) and In-Process, In-Data-Review & Other Non-Indexed Citations <1946 to September 06, 2023> 07.09.2023

1 Gender Dysphoria/ 931  
 2 Gender Identity/ 22157  
 3 "Sexual and Gender Disorders"/ 81  
 4 Transsexualism/ 4580  
 5 Transgender Persons/ 6772  
 6 Health Services for Transgender Persons/ 200  
 7 exp Sex Reassignment Procedures/ 1380  
 8 (gender\* adj3 (dysphori\* or incongru\* or identi\* or disorder\* or confus\* or minorit\* or queer\*)).tw. 14066  
 9 (transgend\* or transex\* or transsex\* or transfem\* or transwom\* or transma\* or transmen\* or transperson\* or transpeopl\*).tw. 22507  
 10 (trans or crossgender\* or cross-gender\* or crossex\* or cross-sex\* or genderqueer\*).tw. 142815  
 11 ((sex or gender\*) adj3 (reassign\* or chang\* or transform\* or transition\*)).tw. 10243  
 12 (male-to-female or m2f or female-to-male or f2m).tw. 159335  
 13 or/1-12 353666  
 14 exp Infant/ or Infant Health/ or Infant Welfare/ 1254902  
 15 (prematu\* or pre-matur\* or preterm\* or pre-term\* or infan\* or newborn\* or new-born\* or perinat\* or peri-nat\* or neonat\* or neo-nat\* or baby\* or babies or toddler\*).ti,ab,in,jn. 1100009  
 16 exp Child/ or exp Child Behavior/ or Child Health/ or Child Welfare/ 2166801  
 17 Minors/ 2827  
 18 (child\* or minor or minors or boy\* or girl\* or kid or kids or young\*).ti,ab,in,jn.3315667  
 19 exp pediatrics/ 63110  
 20 (pediatric\* or paediatric\* or peadiatric\*).ti,ab,in,jn. 1242699  
 21 Adolescent/ or Adolescent Behavior/ or Adolescent Health/ 2220171  
 22 Puberty/ 14367  
 23 (adolescen\* or pubescen\* or prepubescen\* or pre-pubescen\* or pubert\* or prepubert\* or pre-pubert\* or teen\* or preteen\* or pre-teen\* or juvenil\* or youth\* or under\*age\*).ti,ab,in,jn. 615759  
 24 Schools/51709  
 25 Child Day Care Centers/ or exp Nurseries/ or Schools, Nursery/ 7567  
 26 (pre-school\* or preschool\* or kindergar\* or daycare or day-care or nurser\* or school\* or pupil\* or student\*).ti,ab,jn.675438  
 27 (("eight" or "nine" or "ten" or "eleven" or "twelve" or "thirteen" or "fourteen" or "fifteen" or "sixteen" or "seventeen" or "eighteen" or "nineteen") adj2 (year or years or age or ages or aged)).ti,ab. 115375

28 ((("8" or "9" or "10" or "11" or "12" or "13" or "14" or "15" or "16" or "17" or "18" or "19") adj2 (year or  
years or age or ages or aged)).ti,ab. 1246283  
29 or/14-287141922  
30 13 and 29 109741  
31 (transchild\* or transyouth\* or transteen\* or transadoles\* or transgirl\* or transboy\*).tw. 16  
32 30 or 31 109742  
33 Hormones/ad, tu, th 4844  
34 exp Progesterone/ad, tu, th 11379  
35 exp Estrogens/ad, tu, th 29981  
36 exp Gonadal Steroid Hormones/ad, tu, th 35943  
37 (progesteron\* or oestrogen\* or estrogen\*).tw. 231048  
38 ((cross-sex or crosssex or gender-affirm\*) and (hormon\* or steroid\* or therap\* or treatment\* or prescri\*  
or pharm\* or medici\* or drug\* or intervention\* or care)).tw. 2135  
39 exp Estradiol/ad, tu, th 11343  
40 exp Testosterone/ad, tu, th8954  
41 (testosteron\* or sustanon\* or tostran or testogel or testim or restandol or andriol or testocaps\* or nebido  
or testavan).tw. 89985  
42 (oestrad\* or estrad\* or evorel or ethinyloestrad\* or ethinylestrad\* or elleste or progynova or zumenon or  
bedol or femseven or nuvelle).tw. 103158  
43 or/33-42358429  
44 32 and 43 4577  
45 limit 44 to yr="2000 -Current" 3400  
46 animals/ not humans/ 5116436  
47 45 not 46 2421  
48 limit 47 to english language 2372  
49 (MEDLINE or pubmed).tw. 320303  
50 systematic review.tw. 264311  
51 systematic review.pt. 236094  
52 meta-analysis.pt. 185859  
53 intervention\$.ti. 198173  
54 or/49-53675643  
55 randomized controlled trial.pt. 598919  
56 randomi?ed.mp. 1065881  
57 placebo.mp. 246514  
58 or/55-571130505  
59 exp cohort studies/ or exp epidemiologic studies/ or exp clinical trial/ or exp evaluation studies as topic/  
or exp statistics as topic/ 6618077  
60 ((control and (group\* or study)) or (time and factors)).mp. 4079091  
61 (program or survey\* or ci or cohort or comparative stud\* or evaluation studies or follow-up\*).mp.  
5924043  
62 or/59-6111310783  
63 Observational Studies as Topic/ 8981  
64 Observational Study/ 145489  
65 Epidemiologic Studies/ 9381  
66 exp Case-Control Studies/1439992  
67 exp Cohort Studies/ 2514668  
68 Cross-Sectional Studies/ 475811  
69 Controlled Before-After Studies/ 733  
70 Historically Controlled Study/ 229  
71 Interrupted Time Series Analysis/ 1889  
72 Comparative Study.pt. 1912985  
73 case control\$.tw. 157763  
74 case series.tw. 102627  
75 (cohort adj (study or studies)).tw. 314033  
76 cohort analy\$.tw.11705  
77 (follow up adj (study or studies)).tw. 56124  
78 (observational adj (study or studies)).tw. 160387

79 longitudinal.tw. 319973  
 80 prospective.tw. 710838  
 81 retrospective.tw. 739945  
 82 cross sectional.tw. 511982  
 83 or/63-825500850  
 84 54 or 58 or 62 or 83 12064623  
 85 48 and 84 1350  
 86 limit 85 to (letter or historical article or comment or editorial or news or case reports) 59  
 87 85 not 86 1291  
 88 limit 87 to yr="2020 - 2023" 558

Ovid MEDLINE(R) Daily Update <September 06, 2023> 07.09.2023

1 Gender Dysphoria/ 2  
 2 Gender Identity/ 10  
 3 "Sexual and Gender Disorders"/ 0  
 4 Transsexualism/ 3  
 5 Transgender Persons/ 18  
 6 Health Services for Transgender Persons/ 0  
 7 exp Sex Reassignment Procedures/4  
 8 (gender\* adj3 (dysphori\* or incongru\* or identi\* or disorder\* or confus\* or minorit\* or queer\*)).tw. 20  
 9 (transgend\* or transex\* or transsex\* or transfem\* or transwom\* or transma\* or transmen\* or transperson\* or transpeopl\*).tw. 38  
 10 (trans or crossgender\* or cross-gender\* or crosssex\* or cross-sex\* or genderqueer\*).tw. 45  
 11 ((sex or gender\*) adj3 (reassign\* or chang\* or transform\* or transition\*)).tw. 10  
 12 (male-to-female or m2f or female-to-male or f2m).tw. 127  
 13 or/1-12 221  
 14 exp Infant/ or Infant Health/ or Infant Welfare/ 460  
 15 (prematu\* or pre-matur\* or preterm\* or pre-term\* or infan\* or newborn\* or new-born\* or perinat\* or peri-nat\* or neonat\* or neo-nat\* or baby\* or babies or toddler\*).ti,ab,in,jn. 625  
 16 exp Child/ or exp Child Behavior/ or Child Health/ or Child Welfare/ 1127  
 17 Minors/ 0  
 18 (child\* or minor or minors or boy\* or girl\* or kid or kids or young\*).ti,ab,in,jn.2518  
 19 exp pediatrics/ 8  
 20 (pediatric\* or paediatric\* or peadiatric\*).ti,ab,in,jn. 1292  
 21 Adolescent/ or Adolescent Behavior/ or Adolescent Health/ 600  
 22 Puberty/ 1  
 23 (adolesc\* or pubescen\* or prepubescen\* or pre-pubescen\* or pubert\* or prepubert\* or pre-pubert\* or teen\* or preteen\* or pre-teen\* or juvenil\* or youth\* or under\*age\*).ti,ab,in,jn. 567  
 24 Schools/49  
 25 Child Day Care Centers/ or exp Nurseries, Infant/ or Schools, Nursery/ 0  
 26 (pre-school\* or preschool\* or kindergar\* or daycare or day-care or nurser\* or school\* or pupil\* or student\*).ti,ab,jn. 420  
 27 (("eight" or "nine" or "ten" or "eleven" or "twelve" or "thirteen" or "fourteen" or "fifteen" or "sixteen" or "seventeen" or "eighteen" or "nineteen") adj2 (year or years or age or ages or aged)).ti,ab. 58  
 28 (("8" or "9" or "10" or "11" or "12" or "13" or "14" or "15" or "16" or "17" or "18" or "19") adj2 (year or years or age or ages or aged)).ti,ab. 1013  
 29 or/14-284094  
 30 13 and 29 87  
 31 (transchild\* or transyouth\* or transteen\* or transadoles\* or transgirl\* or transboy\*).tw. 0  
 32 30 or 31 87  
 33 Hormones/ad, tu, th 4  
 34 exp Progesterone/ad, tu, th 0  
 35 exp Estrogens/ad, tu, th 2  
 36 exp Gonadal Steroid Hormones/ad, tu, th 5



37 (progesteron\* or oestrogen\* or estrogen\*).tw. 94  
38 ((cross-sex or crosssex or gender-affirm\*) and (hormon\* or steroid\* or therap\* or treatment\* or prescri\*  
or pharm\* or medici\* or drug\* or intervention\* or care)).tw. 11  
39 exp Estradiol/ad, tu, th 2  
40 exp Testosterone/ad, tu, th2  
41 (testosteron\* or sustanon\* or totran or testogel or testim or restandol or andriol or testocaps\* or nebido  
or testavan).tw. 40  
42 (oestrad\* or estrad\* or evorel or ethinyloestrad\* or ethinylestrad\* or elleste or progynova or zumenon or  
bedol or femseven or nuvelle).tw. 38  
43 or/33-42152  
44 32 and 43 10  
45 limit 44 to yr="2000 -Current" 10  
46 animals/ not humans/ 1910  
47 45 not 46 9  
48 limit 47 to english language 9  
49 (MEDLINE or pubmed).tw. 492  
50 systematic review.tw. 446  
51 systematic review.pt. 481  
52 meta-analysis.pt. 343  
53 intervention\$.ti. 205  
54 or/49-53892  
55 randomized controlled trial.pt. 388  
56 randomi?ed.mp. 792  
57 placebo.mp. 167  
58 or/55-57824  
59 exp cohort studies/ or exp epidemiologic studies/ or exp clinical trial/ or exp evaluation studies as topic/  
or exp statistics as topic/ 3959  
60 ((control and (group\* or study)) or (time and factors)).mp. 2102  
61 (program or survey\* or ci or cohort or comparative stud\* or evaluation studies or follow-up\*).mp.  
3631  
62 or/59-616496  
63 Observational Studies as Topic/ 21  
64 Observational Study/ 260  
65 Epidemiologic Studies/ 3  
66 exp Case-Control Studies/ 1309  
67 exp Cohort Studies/ 1963  
68 Cross-Sectional Studies/ 657  
69 Controlled Before-After Studies/ 0  
70 Historically Controlled Study/ 1  
71 Interrupted Time Series Analysis/ 4  
72 Comparative Study.pt. 12  
73 case control\$.tw. 119  
74 case series.tw. 79  
75 (cohort adj (study or studies)).tw. 556  
76 cohort analy\$.tw. 21  
77 (follow up adj (study or studies)).tw. 19  
78 (observational adj (study or studies)).tw. 249  
79 longitudinal.tw. 385  
80 prospective.tw. 591  
81 retrospective.tw. 834  
82 cross sectional.tw. 687  
83 or/63-823095  
84 54 or 58 or 62 or 83 7124  
85 48 and 84 5  
86 limit 85 to (letter or historical article or comment or editorial or news or case reports) 0  
87 85 not 86 5  
88 limit 87 to yr="2020 -Current" 5

**EMBASE**

Search Name: Geschlechtsangleichende Hormontherapie bei Kindern und Jugendlichen mit Genderdysphorie

Date Run: 05/09/2023 16:04:25

No.	Query	Results
#84	#83 NOT ('editorial'/it OR 'letter'/it OR 'conference abstract'/it OR 'conference paper'/it OR 'conference review'/it)	2155
#83	#44 AND #82	2981
#82	#49 OR #53 OR #60 OR #81	15963755
#81	#61 OR #62 OR #63 OR #64 OR #65 OR #66 OR #69 OR #70 OR #71 OR #72 OR #73 OR #74 OR #75 OR #76 OR #77 OR #78 OR #79 OR #80	8311465
#80	retrospective:ti,ab	1253728
#79	prospective:ti,ab	1099295
#78	'case study':ti,ab	120848
#77	cross:ti,ab AND ((sectional NEXT/1 (study OR studies)):ti,ab)	341818
#76	(epidemiologic\$ NEXT/1 (study OR studies)):ti,ab	35838
#75	(observational NEXT/1 (study OR studies)):ti,ab	253988
#74	follow:ti,ab AND ((up NEXT/1 (study OR studies)):ti,ab)	76283
#73	case:ti,ab AND ((control\$ NEXT/1 (study OR studies)):ti,ab)	169382
#72	(cohort NEXT/1 (study OR studies)):ti,ab	464487
#71	cohort AND analy\$:ab,ti	82
#70	'cohort analysis':de	1041057
#69	#67 NOT #68	865365
#68	'randomized controlled trial (topic)':de	260304

No.	Query	Results
#67	'prospective study':de	876016
#66	'comparative study':de	1043625
#65	'retrospective study':de	1482711
#64	'longitudinal study':de	196601
#63	'family study':de	26326
#62	'case control study':de	223584
#61	'clinical study':de	5155803
#60	#54 OR #55 OR #56 OR #57 OR #58 OR #59	11445811
#59	((program OR survey* OR ci OR cohort OR comparative) AND stud* OR evaluation) AND studies OR 'follow up*'	4052500
#58	control AND (group* OR study) OR (time AND factors)	4451812
#57	'statistics':de	454542
#56	'evaluation study':de	229118
#55	'epidemiology'/exp	4523375
#54	'cohort analysis':de	1041057
#53	#50 OR #51 OR #52	856419
#52	'double-blind':ti,ab	224610
#51	'placebo':ti,ab	364966

*Beyond NICE: Aktualisierte Übersicht zur Evidenzlage der Pubertätsblockade und Hormongabe bei Minderjährigen mit Geschlechtsdysphorie - Zepf et al., 2024*

No.	Query	Results
#50	'random':ti,ab	432427
#49	#45 OR #46 OR #47 OR #48	2409152
#48	intervention\$:ti,ab	1745683
#47	'meta analysis'	415652
#46	'systematic review'/exp OR 'systematic review':ti,ab	507340
#45	medline:ti,ab OR pubmed:ti,ab	408380
#44	#42 AND 'human'/de AND [english]/lim	3988
#43	#42 AND 'human'/de	4049
#42	#28 AND #41	4342
#41	#29 OR #30 OR #31 OR #32 OR #33 OR #34 OR #35 OR #36 OR #37 OR #38 OR #39 OR #40	174010
#40	(oestrad*:ti,ab OR estrad*:ti,ab OR evorel:ti,ab OR ethinyloestrad*:ti,ab OR ethinylestrad*:ti,ab OR elleste:ti,ab OR progynova:ti,ab OR zumenon:ti,ab OR bedol:ti,ab OR femseven:ti,ab OR nuvelle:ti,ab) AND [24-07-2020]/sd NOT [05-09-2023]/sd	13365
#39	(testosteron*:ti,ab OR sustanon*:ti,ab OR tostran:ti,ab OR testogel:ti,ab OR testim:ti,ab OR restandol:ti,ab OR andriol:ti,ab OR testocaps*:ti,ab OR nebido:ti,ab OR testavan:ti,ab) AND [24-07-2020]/sd NOT [05-09-2023]/sd	16165
#38	'testosterone derivative'/exp AND [24-07-2020]/sd NOT [05-09-2023]/sd	22292
#37	'estradiol derivative'/exp AND [24-07-2020]/sd NOT [05-09-2023]/sd	19180
#36	('cross sex':ti,ab OR crosssex:ti,ab OR 'gender affirm*':ti,ab) AND (hormon*:ti,ab OR steroid*:ti,ab OR therap*:ti,ab OR treatment*:ti,ab OR prescri*:ti,ab OR pharm*:ti,ab OR medici*:ti,ab OR drug*:ti,ab OR intervention*:ti,ab OR care:ti,ab) AND [24-07-2020]/sd NOT [05-09-2023]/sd	2091

*Beyond NICE: Aktualisierte Übersicht zur Evidenzlage der Pubertätsblockade und Hormongabe bei Minderjährigen mit Geschlechtsdysphorie - Zepf et al., 2024*

No.	Query	Results
#35	(progesteron*:ti,ab OR oestrogen*:ti,ab OR estrogen*:ti,ab) AND [24-07-2020]/sd NOT [05-09-2023]/sd	35747
#34	'hormonal therapy' AND [24-07-2020]/sd NOT [05-09-2023]/sd	12451
#33	'sex hormone' AND [24-07-2020]/sd NOT [05-09-2023]/sd	8439
#32	'steroid hormone' AND [24-07-2020]/sd NOT [05-09-2023]/sd	3288
#31	'estrogen'/exp AND [24-07-2020]/sd NOT [05-09-2023]/sd	34817
#30	'progesterone derivative'/exp AND [24-07-2020]/sd NOT [05-09-2023]/sd	16053
#29	'hormone' AND [24-07-2020]/sd NOT [05-09-2023]/sd	120784
#28	#26 OR #27	97291
#27	(transchild*:ti,ab OR transyouth*:ti,ab OR transteen*:ti,ab OR transadoles*:ti,ab OR transgirl*:ti,ab OR transboy*:ti,ab) AND [24-07-2020]/sd NOT [05-09-2023]/sd	16
#26	#13 AND #25	97291
#25	#14 OR #15 OR #16 OR #17 OR #18 OR #19 OR #20 OR #21 OR #22 OR #23 OR #24	3162220
#24	((('8' OR '9' OR '10' OR '11' OR '12' OR '13' OR '14' OR '15' OR '16' OR '17' OR '18' OR '19') NEAR/2 (year OR years OR age OR ages OR aged)):ti,ab) AND [24-07-2020]/sd NOT [05-09-2023]/sd	577715
#23	((('eight' OR 'nine' OR 'ten' OR 'eleven' OR 'twelve' OR 'thirteen' OR 'fourteen' OR 'fifteen' OR 'sixteen' OR 'seventeen' OR 'eighteen' OR 'nineteen') NEAR/2 (year OR years OR age OR ages OR aged)):ti,ab) AND [24-07-2020]/sd NOT [05-09-2023]/sd	27356
#22	('pre school*:ti,ab,jt OR preschool*:ti,ab,jt OR kindergar*:ti,ab,jt OR daycare:ti,ab,jt OR 'day care':ti,ab,jt OR nurer*:ti,ab,jt OR school*:ti,ab,jt OR pupil*:ti,ab,jt OR student*:ti,ab,jt) AND [24-07-2020]/sd NOT [05-09-2023]/sd	193557
#21	('school' OR 'high school' OR 'kindergarten' OR 'middle school' OR 'primary school' OR 'nursery school' OR 'day care') AND [24-07-2020]/sd NOT [05-09-2023]/sd	2037685

No.	Query	Results
#20	(adolescen*:ab,ti,ad,jt OR pubescen*:ab,ti,ad,jt OR prepubescen*:ab,ti,ad,jt OR 'pre pubescen*:ab,ti,ad,jt OR pubert*:ab,ti,ad,jt OR prepubert*:ab,ti,ad,jt OR 'pre pubert*:ab,ti,ad,jt OR teen*:ab,ti,ad,jt OR preteen*:ab,ti,ad,jt OR 'pre teen*:ab,ti,ad,jt OR juvenil*:ab,ti,ad,jt OR youth*:ab,ti,ad,jt OR under*age*:ab,ti,ad,jt) AND [24-07-2020]/sd NOT [05-09-2023]/sd	192853
#19	('adolescence'/exp OR 'adolescent behavior'/exp OR 'adolescent health' OR 'high school student' OR 'middle school student') AND [24-07-2020]/sd NOT [05-09-2023]/sd	33478
#18	(pediatric*:ti,ab,ad,jt OR paediatric*:ti,ab,ad,jt OR peadiatric*:ti,ab,ad,jt) AND [24-07-2020]/sd NOT [05-09-2023]/sd	457252
#17	'pediatrics'/exp AND [24-07-2020]/sd NOT [05-09-2023]/sd	23830
#16	(child*:ti,ab,ad,jt OR minor:ti,ab,ad,jt OR minors:ti,ab,ad,jt OR boy*:ti,ab,ad,jt OR girl*:ti,ab,ad,jt OR kid:ti,ab,ad,jt OR kids:ti,ab,ad,jt OR young*:ti,ab,ad,jt) AND [24-07-2020]/sd NOT [05-09-2023]/sd	951995
#15	(prematu*:ti,ab,jt,ad OR 'pre matur*:ti,ab,jt,ad OR preterm*:ti,ab,jt,ad OR 'pre term*:ti,ab,jt,ad OR infan*:ti,ab,jt,ad OR newborn*:ti,ab,jt,ad OR 'new born*:ti,ab,jt,ad OR perinat*:ti,ab,jt,ad OR 'peri nat*:ti,ab,jt,ad OR neonat*:ti,ab,jt,ad OR 'neo nat*:ti,ab,jt,ad OR baby*:ti,ab,jt,ad OR babies:ti,ab,jt,ad OR toddler*:ti,ab,jt,ad) AND [24-07-2020]/sd NOT [05-09-2023]/sd	262451
#14	('juvenile'/exp OR 'child behavior'/exp OR 'child welfare'/exp OR 'child health'/exp OR 'infant welfare'/exp OR 'minor (person)'/exp OR 'elementary student'/exp OR 'adolescent health'/exp OR 'middle school student'/exp OR 'high school student'/exp) AND [24-07-2020]/sd NOT [05-09-2023]/sd	696026
#13	#1 OR #2 OR #3 OR #4 OR #5 OR #6 OR #7 OR #8 OR #9 OR #10 OR #11 OR #12	166311
#12	('male to female':ti,ab OR m2f:ti,ab OR 'female to male':ti,ab OR f2m:ti,ab) AND [24-07-2020]/sd NOT [05-09-2023]/sd	6680
#11	((sex OR gender*) NEAR/3 (reassign* OR chang* OR transform* OR transition*)):ti,ab) AND [24-07-2020]/sd NOT [05-09-2023]/sd	3294
#10	(trans:ti,ab OR crossgender*:ti,ab OR 'cross gender*':ti,ab OR crossex*:ti,ab OR 'cross sex*':ti,ab OR genderqueer*:ti,ab) AND [24-07-2020]/sd NOT [05-09-2023]/sd	30632
#9	(transgend*:ti,ab OR transex*:ti,ab OR transsex*:ti,ab OR transfem*:ti,ab OR transwom*:ti,ab OR transma*:ti,ab OR transmen*:ti,ab OR transperson*:ti,ab OR transpeopl*:ti,ab) AND [24-07-2020]/sd NOT [05-09-2023]/sd	11522

No.	Query	Results
#8	((gender* NEAR/3 (dysphori* OR incongru* OR identi* OR disorder* OR confus* OR minorit* OR queer*)):ti,ab) AND [24-07-2020]/sd NOT [05-09-2023]/sd	7666
#7	'sex reassignment'/exp AND [24-07-2020]/sd NOT [05-09-2023]/sd	586
#6	'health service' AND [24-07-2020]/sd NOT [05-09-2023]/sd	102145
#5	'transgender'/exp AND [24-07-2020]/sd NOT [05-09-2023]/sd	7661
#4	'transsexualism' AND [24-07-2020]/sd NOT [05-09-2023]/sd	489
#3	'sexual dysfunction' AND [24-07-2020]/sd NOT [05-09-2023]/sd	8072
#2	'gender identity' AND [24-07-2020]/sd NOT [05-09-2023]/sd	6074
#1	('gender dysphoria'/exp OR 'gender dysphoria') AND [24-07-2020]/sd NOT [05-09-2023]/sd	2110

Query of #84:

((('gender dysphoria'/exp OR 'gender dysphoria') AND [24-07-2020]/sd NOT [05-09-2023]/sd OR ('gender identity' AND [24-07-2020]/sd NOT [05-09-2023]/sd) OR ('sexual dysfunction' AND [24-07-2020]/sd NOT [05-09-2023]/sd) OR ('transsexualism' AND [24-07-2020]/sd NOT [05-09-2023]/sd) OR ('transgender'/exp AND [24-07-2020]/sd NOT [05-09-2023]/sd) OR ('health service' AND [24-07-2020]/sd NOT [05-09-2023]/sd) OR ('sex reassignment'/exp AND [24-07-2020]/sd NOT [05-09-2023]/sd) OR (((gender\* NEAR/3 (dysphori\* OR incongru\* OR identi\* OR disorder\* OR confus\* OR minorit\* OR queer\*)):ti,ab) AND [24-07-2020]/sd NOT [05-09-2023]/sd) OR ((transgend\*:ti,ab OR transex\*:ti,ab OR transex\*:ti,ab OR transsem\*:ti,ab OR transwom\*:ti,ab OR transma\*:ti,ab OR transmen\*:ti,ab OR transperson\*:ti,ab OR transpeopl\*:ti,ab) AND [24-07-2020]/sd NOT [05-09-2023]/sd) OR ((trans:ti,ab OR crossgender\*:ti,ab OR 'cross gender\*':ti,ab OR crossex\*:ti,ab OR 'cross sex\*':ti,ab OR genderqueer\*:ti,ab) AND [24-07-2020]/sd NOT [05-09-2023]/sd) OR (((sex OR gender\*) NEAR/3 (reassign\* OR chang\* OR transform\* OR transition\*)):ti,ab) AND [24-07-2020]/sd NOT [05-09-2023]/sd) OR (('male to female':ti,ab OR m2f:ti,ab OR 'female to male':ti,ab OR f2m:ti,ab) AND [24-07-2020]/sd NOT [05-09-2023]/sd)) AND (('juvenile'/exp OR 'child behavior'/exp OR 'child welfare'/exp OR 'child health'/exp OR 'infant welfare'/exp OR 'minor (person)'/exp OR 'elementary student'/exp OR 'adolescent health'/exp OR 'middle school student'/exp OR 'high school student'/exp) AND [24-07-2020]/sd NOT [05-09-2023]/sd) OR ((prematu\*:ti,ab,jt,ad OR 'pre matur\*':ti,ab,jt,ad OR preterm\*:ti,ab,jt,ad OR 'pre term\*':ti,ab,jt,ad OR infan\*:ti,ab,jt,ad OR newborn\*:ti,ab,jt,ad OR 'new born\*':ti,ab,jt,ad OR perinat\*:ti,ab,jt,ad OR 'peri nat\*':ti,ab,jt,ad OR neonat\*:ti,ab,jt,ad OR 'neo nat\*':ti,ab,jt,ad OR baby\*:ti,ab,jt,ad OR babies:ti,ab,jt,ad OR toddler\*:ti,ab,jt,ad) AND [24-07-2020]/sd NOT [05-09-2023]/sd) OR ((child\*:ti,ab,ad,jt OR minor:ti,ab,ad,jt OR minors:ti,ab,ad,jt OR boy\*:ti,ab,ad,jt OR girl\*:ti,ab,ad,jt OR kid:ti,ab,ad,jt OR kids:ti,ab,ad,jt OR young\*:ti,ab,ad,jt) AND [24-07-2020]/sd NOT [05-09-2023]/sd) OR ('pediatrics'/exp AND [24-07-2020]/sd NOT [05-09-2023]/sd) OR ((pediatric\*:ti,ab,ad,jt OR paediatric\*:ti,ab,ad,jt OR peadiatric\*:ti,ab,ad,jt) AND [24-07-2020]/sd NOT [05-09-2023]/sd) OR (('adolescence'/exp OR 'adolescent behavior'/exp OR 'adolescent health' OR 'high school student'



OR 'middle school student') AND [24-07-2020]/sd NOT [05-09-2023]/sd) OR ((adolescen\*:ab,ti,ad,jt OR pubescen\*:ab,ti,ad,jt OR prepubescen\*:ab,ti,ad,jt OR 'pre pubescen\*':ab,ti,ad,jt OR pubert\*:ab,ti,ad,jt OR prepubert\*:ab,ti,ad,jt OR 'pre pubert\*':ab,ti,ad,jt OR teen\*:ab,ti,ad,jt OR preteen\*:ab,ti,ad,jt OR 'pre teen\*':ab,ti,ad,jt OR juvenil\*:ab,ti,ad,jt OR youth\*:ab,ti,ad,jt OR under\*age\*:ab,ti,ad,jt) AND [24-07-2020]/sd NOT [05-09-2023]/sd) OR (('school' OR 'high school' OR 'kindergarten' OR 'middle school' OR 'primary school' OR 'nursery school' OR 'day care') AND [24-07-2020]/sd NOT [05-09-2023]/sd) OR (('pre school\*':ti,ab,jt OR preschool\*':ti,ab,jt OR kindergar\*':ti,ab,jt OR daycare:ti,ab,jt OR 'day care':ti,ab,jt OR nurser\*':ti,ab,jt OR school\*':ti,ab,jt OR pupil\*':ti,ab,jt OR student\*':ti,ab,jt) AND [24-07-2020]/sd NOT [05-09-2023]/sd) OR (((('eight' OR 'nine' OR 'ten' OR 'eleven' OR 'twelve' OR 'thirteen' OR 'fourteen' OR 'fifteen' OR 'sixteen' OR 'seventeen' OR 'eighteen' OR 'nineteen') NEAR/2 (year OR years OR age OR ages OR aged)):ti,ab) AND [24-07-2020]/sd NOT [05-09-2023]/sd) OR (((('8' OR '9' OR '10' OR '11' OR '12' OR '13' OR '14' OR '15' OR '16' OR '17' OR '18' OR '19') NEAR/2 (year OR years OR age OR ages OR aged)):ti,ab) AND [24-07-2020]/sd NOT [05-09-2023]/sd) OR ((transchild\*':ti,ab OR transyouth\*':ti,ab OR transteen\*':ti,ab OR transadoles\*':ti,ab OR transgirl\*':ti,ab OR transboy\*':ti,ab) AND [24-07-2020]/sd NOT [05-09-2023]/sd) AND ('hormone' AND [24-07-2020]/sd NOT [05-09-2023]/sd) OR ('progesterone derivative'/exp AND [24-07-2020]/sd NOT [05-09-2023]/sd) OR ('estrogen'/exp AND [24-07-2020]/sd NOT [05-09-2023]/sd) OR ('steroid hormone' AND [24-07-2020]/sd NOT [05-09-2023]/sd) OR ('sex hormone' AND [24-07-2020]/sd NOT [05-09-2023]/sd) OR ('hormonal therapy' AND [24-07-2020]/sd NOT [05-09-2023]/sd) OR ((progesteron\*':ti,ab OR oestrogen\*':ti,ab OR estrogen\*':ti,ab) AND [24-07-2020]/sd NOT [05-09-2023]/sd) OR (('cross sex':ti,ab OR crosssex:ti,ab OR 'gender affirm\*':ti,ab) AND (hormon\*':ti,ab OR steroid\*':ti,ab OR therap\*':ti,ab OR treatment\*':ti,ab OR prescri\*':ti,ab OR pharm\*':ti,ab OR medici\*':ti,ab OR drug\*':ti,ab OR intervention\*':ti,ab OR care:ti,ab) AND [24-07-2020]/sd NOT [05-09-2023]/sd) OR ('estradiol derivative'/exp AND [24-07-2020]/sd NOT [05-09-2023]/sd) OR ('testosterone derivative'/exp AND [24-07-2020]/sd NOT [05-09-2023]/sd) OR ((testosteron\*':ti,ab OR sustanon\*':ti,ab OR tostran:ti,ab OR testogel:ti,ab OR testim:ti,ab OR restandol:ti,ab OR andriol:ti,ab OR testocaps\*':ti,ab OR nebido:ti,ab OR testavan:ti,ab) AND [24-07-2020]/sd NOT [05-09-2023]/sd) OR ((oestrad\*':ti,ab OR estrad\*':ti,ab OR evorel:ti,ab OR ethinyloestrad\*':ti,ab OR ethinylestrad\*':ti,ab OR elleste:ti,ab OR progynova:ti,ab OR zumenon:ti,ab OR bedol:ti,ab OR femseven:ti,ab OR nuvelle:ti,ab) AND [24-07-2020]/sd NOT [05-09-2023]/sd) AND 'human'/de AND [english]/lim AND (medline:ti,ab OR pubmed:ti,ab OR 'systematic review'/exp OR 'systematic review':ti,ab OR 'meta analysis' OR intervention\$:ti,ab OR 'random':ti,ab OR 'placebo':ti,ab OR 'double-blind':ti,ab OR 'epidemiology'/exp OR 'evaluation study':de OR 'statistics':de OR (control AND (group\* OR study)) OR (time AND factors) OR (((program OR survey\* OR ci OR cohort OR comparative) AND stud\* OR evaluation) AND studies) OR 'follow up\*' OR 'clinical study':de OR 'case control study':de OR 'family study':de OR 'longitudinal study':de OR 'retrospective study':de OR 'comparative study':de OR ('prospective study':de NOT 'randomized controlled trial (topic)':de) OR 'cohort analysis':de OR (cohort AND analy\$:ab,ti) OR ((cohort NEXT/1 (study OR studies)):ti,ab) OR (case:ti,ab AND ((control\$ NEXT/1 (study OR studies)):ti,ab)) OR (follow:ti,ab AND ((up NEXT/1 (study OR studies)):ti,ab)) OR ((observational NEXT/1 (study OR studies)):ti,ab) OR ((epidemiologic\$ NEXT/1 (study OR studies)):ti,ab) OR (cross:ti,ab AND ((sectional NEXT/1 (study OR studies)):ti,ab)) OR 'case study':ti,ab OR prospective:ti,ab OR retrospective:ti,ab) NOT ('editorial'/it OR 'letter'/it OR 'conference abstract'/it OR 'conference paper'/it OR 'conference review'/it)

## COCHRANE

Search Name: Pubertätsblocker und Geschlechtshormone bei Genderdysphorie

Date Run: 05/09/2023 19:01:07

ID	Search	Hits
#1	MeSH descriptor: [Gender Dysphoria] this term only	16
#2	MeSH descriptor: [Gender Identity] this term only	304
#3	MeSH descriptor: [Sexual and Gender Disorders] this term only	2
#4	MeSH descriptor: [Transsexualism] this term only	40
#5	MeSH descriptor: [Transgender Persons] this term only	110

- #6 MeSH descriptor: [Health Services for Transgender Persons] this term only 0
- #7 MeSH descriptor: [Sex Reassignment Procedures] explode all trees 10
- #8 (gender\* near/3 (dysphori\* or incongru\* or identi\* or disorder\* or confus\* or minorit\* or queer\*)):ti,ab,kw 1284
- #9 (transgend\* or transex\* or transsex\* or transfem\* or transwom\* or transma\* or transmen\* or transperson\* or transpeopl\*):ti,ab,kw 1525
- #10 (trans or crossgender\* or cross-gender\* or crossex\* or cross-sex\* or genderqueer\*):ti,ab,kw 5271
- #11 ((sex or gender\*) near/3 (reassign\* or chang\* or transform\* or transition\*)):ti,ab,kw 708
- #12 (male-to-female or m2f or female-to-male or f2m):ti,ab,kw 723
- #13 #1 or #2 or #3 or #4 or #5 or #6 or #7 or #8 or #9 or #10 or #11 or #12 9022
- #14 MeSH descriptor: [Infant] explode all trees 41997
- #15 MeSH descriptor: [Infant Health] this term only 85
- #16 MeSH descriptor: [Infant Welfare] this term only 91
- #17 (prematu\* or pre-matur\* or preterm\* or pre-term\* or infan\* or newborn\* or new-born\* or perinat\* or peri-nat\* or neonat\* or neo-nat\* or baby\* or babies or toddler\*):ti,ab,kw,so 110386
- #18 MeSH descriptor: [Child] explode all trees 78477
- #19 MeSH descriptor: [Child Behavior] explode all trees 2793
- #20 MeSH descriptor: [Child Health] this term only 317
- #21 MeSH descriptor: [Child Welfare] this term only 409
- #22 MeSH descriptor: [Minors] this term only 11
- #23 (child\* or minor or minors or boy\* or girl\* or kid or kids or young\*):ti,ab,kw,so 339284
- #24 MeSH descriptor: [Pediatrics] explode all trees 1179
- #25 (pediatric\* or paediatric\* or peadiatric\*):ti,ab,kw,so 71120
- #26 MeSH descriptor: [Adolescent] this term only 125806
- #27 MeSH descriptor: [Adolescent Behavior] this term only 1718
- #28 MeSH descriptor: [Adolescent Health] this term only 85
- #29 MeSH descriptor: [Puberty] this term only 403
- #30 (adolesc\* or pubescen\* or prepubescen\* or pre-pubescen\* or pubert\* or prepubert\* or pre-pubert\* or teen\* or preteen\* or pre-teen\* or juvenil\* or youth\* or under\*age\*):ti,ab,kw,so 169090
- #31 MeSH descriptor: [Schools] this term only 3275
- #32 MeSH descriptor: [Child Day Care Centers] this term only 303
- #33 MeSH descriptor: [Nurseries, Infant] explode all trees 13
- #34 MeSH descriptor: [Schools, Nursery] this term only 43
- #35 (pre-school\* or preschool\* or kindergar\* or daycare or day-care or nurser\* or school\* or pupil\* or student\*):ti,ab,kw,so 126022
- #36 (("eight" or "nine" or "ten" or "eleven" or "twelve" or "thirteen" or "fourteen" or "fifteen" or "sixteen" or "seventeen" or "eighteen" or "nineteen") near/2 (year or years or age or ages or aged)):ti,ab 8029

#37	((("8" or "9" or "10" or "11" or "12" or "13" or "14" or "15" or "16" or "17" or "18" or "19") near/2 (year or years or age or ages or aged)):ti,ab	282975
#38	#14 or #15 or #16 or #17 or #18 or #19 or #20 or #21 or #22 or #23 or #24 or #25 or #26 or #27 or #28 or #29 or #30 or #31 or #32 or #33 or #34 or #35 or #36 or #37	671575
#39	#13 and #38	3689
#40	(transchild* or transyouth* or transteen* or transadoles* or transgirl* or transboy*):ti,ab,kw	0
#41	#39 or #40	3689
#42	MeSH descriptor: [Hormones] this term only	2483
#43	MeSH descriptor: [Progesterone] explode all trees	3695
#44	MeSH descriptor: [Estrogens] explode all trees	2223
#45	MeSH descriptor: [Gonadal Steroid Hormones] explode all trees	12426
#46	(progesteron* or oestrogen* or estrogen*):ti,ab,kw	21666
#47	((cross-sex or crosssex or gender-affirm*) and (hormon* or steroid* or therap* or treatment* or prescri* or pharm* or medici* or drug* or intervention* or care)):ti,ab,kw	66
#48	MeSH descriptor: [Estradiol] explode all trees	5001
#49	MeSH descriptor: [Testosterone] explode all trees	3444
#50	(testosteron* or sustanon* or tostran or testogel or testim or restandol or andriol or testocaps* or nebido or testavan):ti,ab,kw	8841
#51	(oestrad* or estrad* or evorel or ethinyloestrad* or ethinylestrad* or elleste or progynova or zumenon or bedol or femseven or nuvelle):ti,ab,kw	13280
#52	#42 or #43 or #44 or #45 or #46 or #47 or #48 or #49 or #50 or #51	37713
#53	#41 and #52	158
#54	"conference":pt or (clinicaltrials or trialsearch):so	705621
#55	#53 not #54	80

## PSYCINFO

Search Name: Geschlechtsangleichende Hormontherapie bei Kindern und Jugendlichen mit Genderdysphorie

Date Run: 06/09/2023 08:12:56

#	Query	Limiters/Expanders	Last Run Via	Results
S44	S42 NOT S43	Limiters - Published Date: 20200701-20230931 Expanders - Apply equivalent subjects Search modes - Boolean/Phrase	Interface - EBSCOhost Research Databases Search Screen - Advanced Search Database - APA PsycInfo	594
S43	S42 AND PT ( book OR authored book OR edited book OR encyclopedia OR dissertation abstract )	Limiters - Published Date: 20200701-20230931 Expanders - Apply equivalent subjects Search modes - Boolean/Phrase	Interface - EBSCOhost Research Databases Search Screen - Advanced Search Database - APA PsycInfo	71

S42	S28 AND S40	Limiters - Published Date: 20200701-20230931 Expanders - Apply equivalent subjects Narrow by Language: - english Search modes - Boolean/Phrase	Interface - EBSCOhost Research Databases Search Screen - Advanced Search Database - APA PsycInfo	665
S41	S28 AND S40	Limiters - Published Date: 20200701-20230931 Expanders - Apply equivalent subjects Search modes - Boolean/Phrase	Interface - EBSCOhost Research Databases Search Screen - Advanced Search Database - APA PsycInfo	675
S40	S29 OR S30 OR S31 OR S32 OR S33 OR S34 OR S35 OR S36 OR S37 OR S38 OR S39	Limiters - Published Date: 20200701-20230931 Expanders - Apply equivalent subjects Search modes - Boolean/Phrase	Interface - EBSCOhost Research Databases Search Screen - Advanced Search Database - APA PsycInfo	5,117
S39	(oestrad* or estrad* or evorel or ethinyloestrad* or ethinylestrad* or elleste or progynova or zumenon or bedol or femseven or nuvelle)	Limiters - Published Date: 20200701-20230931 Expanders - Apply equivalent subjects Search modes - Boolean/Phrase	Interface - EBSCOhost Research Databases Search Screen - Advanced Search Database - APA PsycInfo	694
S38	(testosteron* or sustanon* or totran or testogel or testim or restandol or andriol or testocaps* or nebido or testavan)	Limiters - Published Date: 20200701-20230931 Expanders - Apply equivalent subjects Search modes - Boolean/Phrase	Interface - EBSCOhost Research Databases Search Screen - Advanced Search Database - APA PsycInfo	745
S37	testosterone/	Limiters - Published Date: 20200701-20230931 Expanders - Apply equivalent subjects Search modes - Boolean/Phrase	Interface - EBSCOhost Research Databases Search Screen - Advanced Search Database - APA PsycInfo	745
S36	estradiol/	Limiters - Published Date: 20200701-20230931 Expanders - Apply equivalent subjects Search modes - Boolean/Phrase	Interface - EBSCOhost Research Databases Search Screen - Advanced Search Database - APA PsycInfo	467
S35	((cross-sex or crosssex or gender-affirm*) and (hormon* or steroid* or therap* or treatment* or prescri* or pharm* or medici* or drug* or intervention* or care))	Limiters - Published Date: 20200701-20230931 Expanders - Apply equivalent subjects Search modes - Boolean/Phrase	Interface - EBSCOhost Research Databases Search Screen - Advanced Search Database - APA PsycInfo	560
S34	(progesteron* or oestrogen* or estrogen*)	Limiters - Published Date: 20200701-20230931 Expanders - Apply equivalent subjects Search modes - Boolean/Phrase	Interface - EBSCOhost Research Databases Search Screen - Advanced Search Database - APA PsycInfo	865
S33	steroids/	Limiters - Published Date: 20200701-20230931 Expanders - Apply equivalent	Interface - EBSCOhost Research Databases Search Screen - Advanced	784

		subjects Search modes - Boolean/Phrase	Search Database - APA PsycInfo	
S32	estrogens/	Limiters - Published Date: 20200701-20230931 Expanders - Apply equivalent subjects Search modes - Boolean/Phrase	Interface - EBSCOhost Research Databases Search Screen - Advanced Search Database - APA PsycInfo	598
S31	progestational hormones/exp	Limiters - Published Date: 20200701-20230931 Expanders - Apply equivalent subjects Search modes - SmartText Searching	Interface - EBSCOhost Research Databases Search Screen - Advanced Search Database - APA PsycInfo	27
S30	sex hormones/	Limiters - Published Date: 20200701-20230931 Expanders - Apply equivalent subjects Search modes - Boolean/Phrase	Interface - EBSCOhost Research Databases Search Screen - Advanced Search Database - APA PsycInfo	441
S29	hormones/	Limiters - Published Date: 20200701-20230931 Expanders - Apply equivalent subjects Search modes - Boolean/Phrase	Interface - EBSCOhost Research Databases Search Screen - Advanced Search Database - APA PsycInfo	3,572
S28	S26 OR S27	Limiters - Published Date: 20200701-20230931 Expanders - Apply equivalent subjects Search modes - Boolean/Phrase	Interface - EBSCOhost Research Databases Search Screen - Advanced Search Database - APA PsycInfo	12,962
S27	(transchild* or transyouth* or transteen* or transadoles* or transgirl* or transboy*)	Limiters - Published Date: 20200701-20230931 Expanders - Apply equivalent subjects Search modes - Boolean/Phrase	Interface - EBSCOhost Research Databases Search Screen - Advanced Search Database - APA PsycInfo	4
S26	S11 AND S25	Expanders - Apply equivalent subjects Search modes - Find all my search terms	Interface - EBSCOhost Research Databases Search Screen - Advanced Search Database - APA PsycInfo	12,965
S25	S12 OR S13 OR S14 OR S15 OR S16 OR S17 OR S18 OR S19 OR S20 OR S21 OR S22 OR S23 OR S24	Expanders - Apply equivalent subjects Search modes - Find all my search terms	Interface - EBSCOhost Research Databases Search Screen - Advanced Search Database - APA PsycInfo	319,700
S24	((("8" or "9" or "10" or "11" or "12" or "13" or "14" or "15" or "16" or "17" or "18" or "19") N2 (year or years or age or ages or aged))	Limiters - Published Date: 20200701-20230931 Expanders - Apply equivalent subjects Search modes - Boolean/Phrase	Interface - EBSCOhost Research Databases Search Screen - Advanced Search Database - APA PsycInfo	24,239
S23	((("eight" or "nine" or "ten" or "eleven" or "twelve" or "thirteen" or "fourteen" or "fifteen" or	Limiters - Published Date: 20200701-20230931 Expanders - Apply equivalent	Interface - EBSCOhost Research Databases Search Screen - Advanced	3,040

	"sixteen" or "seventeen" or "eighteen" or "nineteen") N2 (year or years or age or ages or aged))	subjects Search modes - Boolean/Phrase	Search Database - APA PsycInfo	
S22	(pre-school* or preschool* or kindergar* or daycare or day-care or nurser* or school* or pupil* or student*)	Limiters - Published Date: 20200701-20230931 Expanders - Apply equivalent subjects Search modes - Boolean/Phrase	Interface - EBSCOhost Research Databases Search Screen - Advanced Search Database - APA PsycInfo	233,196
S21	Child Day Care/ or Nursery Schools/	Limiters - Published Date: 20200701-20230931 Expanders - Apply equivalent subjects Search modes - Boolean/Phrase	Interface - EBSCOhost Research Databases Search Screen - Advanced Search Database - APA PsycInfo	908
S20	Schools/	Limiters - Published Date: 20200701-20230931 Expanders - Apply equivalent subjects Search modes - Boolean/Phrase	Interface - EBSCOhost Research Databases Search Screen - Advanced Search Database - APA PsycInfo	205,199
S19	(adolescen* or pubescen* or prepubescen* or pre-pubescen* or pubert* or prepubert* or pre-pubert* or teen* or preteen* or pre-teen* or juvenil* or youth* or under*age*)	Limiters - Published Date: 20200701-20230931 Expanders - Apply equivalent subjects Search modes - Boolean/Phrase	Interface - EBSCOhost Research Databases Search Screen - Advanced Search Database - APA PsycInfo	62,778
S18	Puberty/	Limiters - Published Date: 20200701-20230931 Expanders - Apply equivalent subjects Search modes - Boolean/Phrase	Interface - EBSCOhost Research Databases Search Screen - Advanced Search Database - APA PsycInfo	725
S17	Adolescent Psychiatry/ or Adolescent Behavior/ or Adolescent Development/ or Adolescent Psychology/ or Adolescent Characteristics/ or Adolescent Health/	Limiters - Published Date: 20200701-20230931 Expanders - Apply equivalent subjects Search modes - Boolean/Phrase	Interface - EBSCOhost Research Databases Search Screen - Advanced Search Database - APA PsycInfo	22,433
S16	(pediatric* or paediatric* or peadiatric*)	Limiters - Published Date: 20200701-20230931 Expanders - Apply equivalent subjects Search modes - Boolean/Phrase	Interface - EBSCOhost Research Databases Search Screen - Advanced Search Database - APA PsycInfo	15,905
S15	(child* or minor or minors or boy* or girl* or kid or kids or young*)	Limiters - Published Date: 20200701-20230931 Expanders - Apply equivalent subjects Search modes - Boolean/Phrase	Interface - EBSCOhost Research Databases Search Screen - Advanced Search Database - APA PsycInfo	140,569
S14	Child Characteristics/ or Child Behavior/exp or	Limiters - Published Date: 20200701-20230931	Interface - EBSCOhost Research Databases	18,696

	Child Psychology/ or Child Welfare/exp or Child Psychiatry/	Expanders - Apply equivalent subjects Search modes - Boolean/Phrase	Search Screen - Advanced Search Database - APA PsycInfo	
S13	(premat* or pre- mat* or preterm* or pre-term* or infan* or newborn* or new-born* or perinat* or peri-nat* or neonat* or neo-nat* or baby* or babies or toddler*)	Limiters - Published Date: 20200701-20230931 Expanders - Apply equivalent subjects Search modes - Boolean/Phrase	Interface - EBSCOhost Research Databases Search Screen - Advanced Search Database - APA PsycInfo	19,743
S12	Infant Development/exp	Limiters - Published Date: 20200701-20230931 Expanders - Apply equivalent subjects Search modes - SmartText Searching	Interface - EBSCOhost Research Databases Search Screen - Advanced Search Database - APA PsycInfo	4,773
S11	S1 OR S2 OR S3 OR S4 OR S5 OR S6 OR S7 OR S8 OR S9 OR S10	Expanders - Apply equivalent subjects Search modes - Find all my search terms	Interface - EBSCOhost Research Databases Search Screen - Advanced Search Database - APA PsycInfo	19,880
S10	(male-to-female or m2f or female-to-male or f2m)	Limiters - Published Date: 20200701-20230931 Expanders - Apply equivalent subjects Search modes - Boolean/Phrase	Interface - EBSCOhost Research Databases Search Screen - Advanced Search Database - APA PsycInfo	8,925
S9	((sex or gender*) N3 (reassign* or chang* or transform* or transition*))	Limiters - Published Date: 20200701-20230931 Expanders - Apply equivalent subjects Search modes - Boolean/Phrase	Interface - EBSCOhost Research Databases Search Screen - Advanced Search Database - APA PsycInfo	1,333
S8	(trans or crossgender* or cross-gender* or crossex* or cross-sex* or genderqueer*)	Limiters - Published Date: 20200701-20230931 Expanders - Apply equivalent subjects Search modes - Boolean/Phrase	Interface - EBSCOhost Research Databases Search Screen - Advanced Search Database - APA PsycInfo	3,011
S7	(transgend* or transex* or transsex* or transfem* or transwom* or transma* or transmen* or transperson* or transpeopl*)	Limiters - Published Date: 20200701-20230931 Expanders - Apply equivalent subjects Search modes - Boolean/Phrase	Interface - EBSCOhost Research Databases Search Screen - Advanced Search Database - APA PsycInfo	4,125
S6	gender* N3 (dysphori* or incongruen* or identi* or disorder* or confus* or minorit* or queer*)	Limiters - Published Date: 20200701-20230931 Expanders - Apply equivalent subjects Search modes - Boolean/Phrase	Interface - EBSCOhost Research Databases Search Screen - Advanced Search Database - APA PsycInfo	6,473
S5	Gender Reassignment/exp	Limiters - Published Date: 20200701-20230931 Expanders - Apply equivalent subjects	Interface - EBSCOhost Research Databases Search Screen - Advanced Search Database - APA PsycInfo	180

		Search modes - SmartText Searching	
S4	Transgender/	Limiters - Published Date: 20200701-20230931 Expanders - Apply equivalent subjects Search modes - Boolean/Phrase	Interface - EBSCOhost Research Databases Search Screen - Advanced Search Database - APA PsycInfo 3,833
S3	Transsexualism/	Limiters - Published Date: 20200701-20230931 Expanders - Apply equivalent subjects Search modes - Boolean/Phrase	Interface - EBSCOhost Research Databases Search Screen - Advanced Search Database - APA PsycInfo 171
S2	Gender Identity/	Limiters - Published Date: 20200701-20230931 Expanders - Apply equivalent subjects Search modes - Boolean/Phrase	Interface - EBSCOhost Research Databases Search Screen - Advanced Search Database - APA PsycInfo 3,852
S1	Gender Dysphoria/	Limiters - Published Date: 20200701-20230931 Expanders - Apply equivalent subjects Search modes - Boolean/Phrase	Interface - EBSCOhost Research Databases Search Screen - Advanced Search Database - APA PsycInfo 420

---

## Rechercheprotokoll (research protocol):

---

# Nach NICE: Evidence review: Gonadotrophin releasing hormone analogues for children and adolescents with gender dysphoria

Ovid MEDLINE

+Daily Updates

+Epub

+In-Process

Embase

Cochrane

PsycINFO

---



Ovid MEDLINE(R) <2019 to August Week 5 2023> 07.09.2023

1 Gender Dysphoria/ 593  
2 Gender Identity/ 4381  
3 "Sexual and Gender Disorders"/7  
4 Transsexualism/ 1024  
5 Transgender Persons/ 4310  
6 Health Services for Transgender Persons/ 85  
7 exp Sex Reassignment Procedures/ 717  
8 (gender\* adj3 (dysphori\* or affirm\* or incongruen\* or identi\* or disorder\* or confus\* or  
minorit\* or queer\*).tw.6326  
9 (transgend\* or transex\* or transsex\* or transfem\* or transwom\* or transma\* or transmen\* or  
transperson\* or transpeopl\*).tw. 7971  
10 (trans or crossgender\* or cross-gender\* or crossex\* or cross-sex\* or genderqueer\*).tw. 19132  
11 ((sex or gender\*) adj3 (reassign\* or chang\* or transform\* or transition\*).tw. 2438  
12 (male-to-female or m2f or female-to-male or f2m).tw. 30598  
13 or/1-12 63297  
14 exp Infant/ or Infant Health/ or Infant Welfare/ 149805  
15 (premat\* or pre-matur\* or preterm\* or pre-term\* or infan\* or newborn\* or new-born\* or  
perinat\* or peri-nat\* or neonat\* or neo-nat\* or baby\* or babies or toddler\*).ti,ab,in,jn.  
181641  
16 exp Child/ or exp Child Behavior/ or Child Health/ or Child Welfare/ 314770  
17 Minors/302  
18 (child\* or minor or minors or boy\* or girl\* or kid or kids or young\*).ti,ab,in,jn. 661469  
19 exp pediatrics/ 7031  
20 (pediatric\* or paediatric\* or peadiatric\*).ti,ab,in,jn. 308029  
21 Adolescent/ or Adolescent Behavior/ or Adolescent Health/ 267013  
22 Puberty/ 1322  
23 (adolesc\* or pubescen\* or prepubescen\* or pre-pubescen\* or pubert\* or prepubert\* or pre-  
pubert\* or teen\* or preteen\* or pre-teen\* or juvenil\* or youth\* or under\*age\*).ti,ab,in,jn.  
139746  
24 Schools/ 16086  
25 Child Day Care Centers/ or exp Nurseries/ or Schools, Nursery/ 495  
26 (pre-school\* or preschool\* or kindergar\* or daycare or day-care or nurser\* or school\* or  
pupil\* or student\*).ti,ab,jn. 131586  
27 (("eight" or "nine" or "ten" or "eleven" or "twelve" or "thirteen" or "fourteen" or "fifteen" or  
"sixteen" or "seventeen" or "eighteen" or "nineteen") adj2 (year or years or age or ages or  
aged)).ti,ab. 15904  
28 (("8" or "9" or "10" or "11" or "12" or "13" or "14" or "15" or "16" or "17" or "18" or "19")  
adj2 (year or years or age or ages or aged)).ti,ab. 262854  
29 or/14-28 1153774  
30 13 and 29 22895  
31 (transchild\* or transyouth\* or transteen\* or transadoles\* or transgirl\* or transboy\*).tw. 7  
32 30 or 31 22896  
33 Gonadotropin-Releasing Hormone/ 2549  
34 (pubert\* adj3 block\*).ti,ab. 78  
35 ((gonadotrophin or gonadotropin) and releasing).ti,ab. 2427  
36 (GnRH adj2 analog\*).ti,ab. 247  
37 GnRH\*.ti,ab. 3093  
38 "GnRH agonist\*".ti,ab. 584  
39 Triptorelin Pamoate/ 131  
40 triptorelin.ti,ab. 110  
41 arvekap.ti,ab. 0  
42 ("AY 25650" or AY25650).ti,ab. 0  
43 ("BIM 21003" or BIM21003).ti,ab. 0

44	("BN 52014" or BN52014).ti,ab.	0
45	("CL 118532" or CL118532).ti,ab.	0
46	Debio.ti,ab.	48
47	diphereline.ti,ab.	5
48	moapar.ti,ab.	0
49	pamorelin.ti,ab.	0
50	trellstar.ti,ab.	0
51	triptodur.ti,ab.	0
52	("WY 42422" or WY42422).ti,ab.	0
53	("WY 42462" or WY42462).ti,ab.	0
54	gonapeptyl.ti,ab.	0
55	decapeptyl.ti,ab.	4
56	salvacyl.ti,ab.	0
57	Buserelin/	41
58	buserelin.ti,ab.	58
59	bigonist.ti,ab.	0
60	("hoe 766" or hoe-766 or hoe766).ti,ab.	0
61	profact.ti,ab.	1
62	receptal.ti,ab.	4
63	suprecur.ti,ab.	0
64	suprefact.ti,ab.	0
65	tiloryth.ti,ab.	0
66	histrelin.ti,ab.	12
67	"LHRH-hydrogel implant".ti,ab.	0
68	("RL 0903" or RL0903).ti,ab.	0
69	("SPD 424" or SPD424).ti,ab.	0
70	goserelin.ti,ab.	98
71	Goserelin/	61
72	("ici 118630" or ici118630).ti,ab.	0
73	("ZD-9393" or ZD9393).ti,ab.	0
74	zoladex.ti,ab.	5
75	leuprorelin.ti,ab.	82
76	carcinil.ti,ab.	0
77	enanton*.ti,ab.	2
78	ginecrin.ti,ab.	0
79	leuplin.ti,ab.	2
80	Leuprolide/	222
81	leuprolide.ti,ab.	199
82	lucrin.ti,ab.	2
83	lupron.ti,ab.	22
84	provren.ti,ab.	0
85	procrin.ti,ab.	0
86	("tap 144" or tap144).ti,ab.	1
87	(a-43818 or a43818).ti,ab.	0
88	Trenantone.ti,ab.	0
89	staladex.ti,ab.	0
90	prostap.ti,ab.	0
91	Nafarelin/	1
92	nafarelin.ti,ab.	5
93	("76932-56-4" or "76932564").ti,ab.	0
94	("76932-60-0" or "76932600").ti,ab.	0
95	("86220-42-0" or "86220420").ti,ab.	0
96	("rs 94991 298" or rs94991298).ti,ab.	0
97	synarel.ti,ab.	1
98	deslorelin.ti,ab.	48
99	gonadorelin.ti,ab.	42

100	("33515-09-2" or "33515092").ti,ab.	0
101	("51952-41-1" or "51952411").ti,ab.	0
102	("52699-48-6" or "52699486").ti,ab.	0
103	cetorelix.ti,ab.	47
104	cetrotide.ti,ab.	4
105	("NS 75A" or NS75A).ti,ab.	0
106	("NS 75B" or NS75B).ti,ab.	0
107	("SB 075" or SB075).ti,ab.	1
108	("SB 75" or SB75).ti,ab.	1
109	gonadoliberin.ti,ab.	9
110	kryptocur.ti,ab.	1
111	cetorelix.ti,ab.	47
112	cetrotide.ti,ab.	4
113	antagon.ti,ab.	0
114	ganirelix.ti,ab.	23
115	("ORG 37462" or ORG37462).ti,ab.	0
116	orgalutran.ti,ab.	3
117	("RS 26306" or RS26306).ti,ab.	0
118	("AY 24031" or AY24031).ti,ab.	0
119	factrel.ti,ab.	1
120	fertagyl.ti,ab.	2
121	lutref.ti,ab.	0
122	lutrepulse.ti,ab.	0
123	relefact.ti,ab.	1
124	fertiral.ti,ab.	0
125	(hoe471 or "hoe 471").ti,ab.	0
126	relisorm.ti,ab.	0
127	cystorelin.ti,ab.	1
128	dirigestran.ti,ab.	0
129	or/33-128	4556
130	32 and 129	172
131	limit 130 to english language	166
132	limit 131 to (letter or historical article or comment or editorial or news or case reports)	30
133	131 not 132	136
134	animals/ not humans/	547663
135	133 not 134	122
136	limit 135 to yr="2020 -Current"	100

Ovid MEDLINE(R) Epub Ahead of Print <September 06, 2023> 07.09.2023

1	Gender Dysphoria/	0
2	Gender Identity/	0
3	"Sexual and Gender Disorders"/	0
4	Transsexualism/	0
5	Transgender Persons/	0
6	Health Services for Transgender Persons/	0
7	exp Sex Reassignment Procedures/	0
8	(gender* adj3 (dysphori* or affirm* or incongruen* or identi* or disorder* or confus* or minorit* or queer*)).tw.	619
9	(transgend* or transex* or transsex* or transfem* or transwom* or transma* or transmen* or transperson* or transpeopl*).tw.	640
10	(trans or crossgender* or cross-gender* or crossex* or cross-sex* or genderqueer*).tw.	1199
11	((sex or gender*) adj3 (reassign* or chang* or transform* or transition*)).tw.	140
12	(male-to-female or m2f or female-to-male or f2m).tw.	2158

13	or/1-12	4326	
14	exp Infant/ or Infant Health/ or Infant Welfare/	0	
15	(premat* or pre-matur* or preterm* or pre-term* or infan* or newborn* or new-born* or perinat* or peri-nat* or neonat* or neo-nat* or baby* or babies or toddler*).ti,ab,in,jn.	13460	
16	exp Child/ or exp Child Behavior/ or Child Health/ or Child Welfare/	0	
17	Minors/	0	
18	(child* or minor or minors or boy* or girl* or kid or kids or young*).ti,ab,in,jn.	44866	
19	exp pediatrics/	0	
20	(pediatric* or paediatric* or peadiatric*).ti,ab,in,jn.	19407	
21	Adolescent/ or Adolescent Behavior/ or Adolescent Health/	0	
22	Puberty/	0	
23	(adolescen* or pubescen* or prepubescen* or pre-pubescen* or pubert* or prepubert* or pre-pubert* or teen* or preteen* or pre-teen* or juvenil* or youth* or under*age*).ti,ab,in,jn.	10820	
24	Schools/	0	
25	Child Day Care Centers/ or exp Nurseries, Infant/ or Schools, Nursery/		
26	(pre-school* or preschool* or kindergar* or daycare or day-care or nurser* or school* or pupil* or student*).ti,ab,jn.	11565	
27	((("eight" or "nine" or "ten" or "eleven" or "twelve" or "thirteen" or "fourteen" or "fifteen" or "sixteen" or "seventeen" or "eighteen" or "nineteen") adj2 (year or years or age or ages or aged)).ti,ab.	1259	
28	((("8" or "9" or "10" or "11" or "12" or "13" or "14" or "15" or "16" or "17" or "18" or "19") adj2 (year or years or age or ages or aged)).ti,ab.	17467	
29	or/14-28	75639	
30	13 and 29	1459	
31	(transchild* or transyouth* or transteen* or transadoles* or transgirl* or transboy*).tw.	0	
32	30 or 31	1459	
33	Gonadotropin-Releasing Hormone/	0	
34	(pubert* adj3 block*).ti,ab.	3	
35	((gonadotrophin or gonadotropin) and releasing).ti,ab.	151	
36	(GnRH adj2 analog*).ti,ab.	16	
37	GnRH*.ti,ab.	190	
38	"GnRH agonist".ti,ab.	42	
39	Triptorelin Pamoate/	0	
40	triptorelin.ti,ab.	10	
41	arvekap.ti,ab.	0	
42	("AY 25650" or AY25650).ti,ab.	0	
43	("BIM 21003" or BIM21003).ti,ab.	0	
44	("BN 52014" or BN52014).ti,ab.	0	
45	("CL 118532" or CL118532).ti,ab.	0	
46	Debio.ti,ab.	4	
47	diphereline.ti,ab.	0	
48	moapar.ti,ab.	0	
49	pamorelin.ti,ab.	0	
50	trelstar.ti,ab.	0	
51	triptodur.ti,ab.	0	
52	("WY 42422" or WY42422).ti,ab.	0	
53	("WY 42462" or WY42462).ti,ab.	0	
54	gonapeptyl.ti,ab.	0	
55	decapeptyl.ti,ab.	0	
56	salvacyl.ti,ab.	0	
57	Buserelin/	0	

58	buserelin.ti,ab.	3	
59	bigonist.ti,ab.	0	
60	("hoe 766" or hoe-766 or hoe766).ti,ab.	0	
61	profact.ti,ab.	0	
62	receptal.ti,ab.	0	
63	suprecur.ti,ab.	0	
64	suprefact.ti,ab.	1	
65	tiloryth.ti,ab.	0	
66	histrelin.ti,ab.	3	
67	"LHRH-hydrogel implant".ti,ab.	0	
68	("RL 0903" or RL0903).ti,ab.	0	
69	("SPD 424" or SPD424).ti,ab.	0	
70	goserelin.ti,ab.	13	
71	Goserelin/	0	
72	("ici 118630" or ici118630).ti,ab.	0	
73	("ZD-9393" or ZD9393).ti,ab.	0	
74	zoladex.ti,ab.	1	
75	leuprorelin.ti,ab.	14	
76	carcinil.ti,ab.	0	
77	enanton*.ti,ab.	0	
78	ginecrin.ti,ab.	0	
79	leuplin.ti,ab.	0	
80	Leuprolide/	0	
81	leuprolide.ti,ab.	27	
82	lucrin.ti,ab.	0	
83	lupron.ti,ab.	4	
84	provren.ti,ab.	0	
85	procrin.ti,ab.	0	
86	("tap 144" or tap144).ti,ab.	0	
87	(a-43818 or a43818).ti,ab.	0	
88	Trenantone.ti,ab.	0	
89	staladex.ti,ab.	0	
90	prostap.ti,ab.	0	
91	Nafarelin/	0	
92	nafarelin.ti,ab.	2	
93	("76932-56-4" or "76932564").ti,ab.	0	
94	("76932-60-0" or "76932600").ti,ab.	0	
95	("86220-42-0" or "86220420").ti,ab.	0	
96	("rs 94991 298" or rs94991298).ti,ab.	0	
97	synarel.ti,ab.	0	
98	deslorelin.ti,ab.	2	
99	gonadorelin.ti,ab.	2	
100	("33515-09-2" or "33515092").ti,ab.	0	
101	("51952-41-1" or "51952411").ti,ab.	0	
102	("52699-48-6" or "52699486").ti,ab.	0	
103	cetrotide.ti,ab.	2	
104	cetrotide.ti,ab.	0	
105	("NS 75A" or NS75A).ti,ab.	0	
106	("NS 75B" or NS75B).ti,ab.	0	
107	("SB 075" or SB075).ti,ab.	2	
108	("SB 75" or SB75).ti,ab.	0	
109	gonadoliberin.ti,ab.	0	

110 kryptocur.ti,ab. 0  
 111 cetrotide.ti,ab. 2  
 112 cetrotide.ti,ab. 0  
 113 antagon.ti,ab. 1  
 114 ganirelix.ti,ab. 0  
 115 ("ORG 37462" or ORG37462).ti,ab. 0  
 116 orgalutran.ti,ab.0  
 117 ("RS 26306" or RS26306).ti,ab.0  
 118 ("AY 24031" or AY24031).ti,ab. 0  
 119 factrel.ti,ab. 0  
 120 fertagyl.ti,ab. 0  
 121 lutrelef.ti,ab. 0  
 122 lutrepulse.ti,ab. 0  
 123 relefact.ti,ab. 0  
 124 fertiral.ti,ab. 0  
 125 (hoe471 or "hoe 471").ti,ab. 0  
 126 relisorm.ti,ab. 0  
 127 cystorelin.ti,ab. 0  
 128 dirigestran.ti,ab. 0  
 129 or/33-128 274  
 130 32 and 129 11  
 131 limit 130 to english language 11  
 132 limit 131 to yr="2020 -Current" 11

Ovid MEDLINE(R) and In-Process, In-Data-Review & Other Non-Indexed Citations <1946 to September 06, 2023> 07.09.2023

1 Gender Dysphoria/ 931  
 2 Gender Identity/ 22157  
 3 "Sexual and Gender Disorders"/81  
 4 Transsexualism/ 4580  
 5 Transgender Persons/ 6772  
 6 Health Services for Transgender Persons/ 200  
 7 exp Sex Reassignment Procedures/ 1380  
 8 (gender\* adj3 (dysphori\* or affirm\* or incongruen\* or identi\* or disorder\* or confus\* or minorit\* or queer\*).tw.15507  
 9 (transgend\* or transex\* or transsex\* or transfem\* or transwom\* or transma\* or transmen\* or transperson\* or transpeopl\*).tw. 22507  
 10 (trans or crossgender\* or cross-gender\* or crossex\* or cross-sex\* or genderqueer\*).tw. 142815  
 11 ((sex or gender\*) adj3 (reassign\* or chang\* or transform\* or transition\*).tw. 10243  
 12 (male-to-female or m2f or female-to-male or f2m).tw. 159335  
 13 or/1-12 353805  
 14 exp Infant/ or Infant Health/ or Infant Welfare/ 1254902  
 15 (premat\* or pre-matur\* or preterm\* or pre-term\* or infan\* or newborn\* or new-born\* or perinat\* or peri-nat\* or neonat\* or neo-nat\* or baby\* or babies or toddler\*).ti,ab,in,jn. 1100009  
 16 exp Child/ or exp Child Behavior/ or Child Health/ or Child Welfare/ 2166801  
 17 Minors/2827  
 18 (child\* or minor or minors or boy\* or girl\* or kid or kids or young\*).ti,ab,in,jn. 3315667  
 19 exp pediatrics/ 63110  
 20 (pediatric\* or paediatric\* or peadiatric\*).ti,ab,in,jn. 1242699

21	Adolescent/ or Adolescent Behavior/ or Adolescent Health/	2220171
22	Puberty/	14367
23	(adolescen* or pubescen* or prepubescen* or pre-pubescen* or pubert* or prepubert* or pre-pubert* or teen* or preteen* or pre-teen* or juvenil* or youth* or under*age*).ti,ab,in,jn.	615759
24	Schools/	51709
25	Child Day Care Centers/ or exp Nurseries/ or Schools, Nursery/	7567
26	(pre-school* or preschool* or kindergar* or daycare or day-care or nurser* or school* or pupil* or student*).ti,ab,jn.	675438
27	((("eight" or "nine" or "ten" or "eleven" or "twelve" or "thirteen" or "fourteen" or "fifteen" or "sixteen" or "seventeen" or "eighteen" or "nineteen") adj2 (year or years or age or ages or aged)).ti,ab.	115375
28	((("8" or "9" or "10" or "11" or "12" or "13" or "14" or "15" or "16" or "17" or "18" or "19") adj2 (year or years or age or ages or aged)).ti,ab.	1246283
29	or/14-28	7141922
30	13 and 29	109781
31	(transchild* or transyouth* or transteen* or transadoles* or transgirl* or transboy*).tw.	16
32	30 or 31	109782
33	Gonadotropin-Releasing Hormone/	29656
34	(pubert* adj3 block*).ti,ab.	164
35	((gonadotrophin or gonadotropin) and releasing).ti,ab.	20934
36	(GnRH adj2 analog*).ti,ab.	2956
37	GnRH*.ti,ab.	25424
38	"GnRH agonist*".ti,ab.	4953
39	Triptorelin Pamoate/	2003
40	triptorelin.ti,ab.	855
41	arvekap.ti,ab.	1
42	("AY 25650" or AY25650).ti,ab.	1
43	("BIM 21003" or BIM21003).ti,ab.	0
44	("BN 52014" or BN52014).ti,ab.	0
45	("CL 118532" or CL118532).ti,ab.	0
46	Debio.ti,ab.	125
47	diphereline.ti,ab.	30
48	moapar.ti,ab.	0
49	pamorelin.ti,ab.	1
50	trelstar.ti,ab.	3
51	triptodur.ti,ab.	1
52	("WY 42422" or WY42422).ti,ab.	0
53	("WY 42462" or WY42462).ti,ab.	0
54	gonapeptyl.ti,ab.	0
55	decapeptyl.ti,ab.	228
56	salvacyl.ti,ab.	0
57	Buserelin/	2150
58	buserelin.ti,ab.	1415
59	bigonist.ti,ab.	0
60	("hoe 766" or hoe-766 or hoe766).ti,ab.	72
61	profact.ti,ab.	2
62	receptal.ti,ab.	34
63	suprecur.ti,ab.	5
64	suprefact.ti,ab.	24
65	tiloryth.ti,ab.	0
66	histrelin.ti,ab.	79

67	"LHRH-hydrogel implant".ti,ab.	1
68	("RL 0903" or RL0903).ti,ab.	1
69	("SPD 424" or SPD424).ti,ab.	1
70	goserelin.ti,ab.	1044
71	Goserelin/	1655
72	("ici 118630" or ici118630).ti,ab.	51
73	("ZD-9393" or ZD9393).ti,ab.	0
74	zoladex.ti,ab.	391
75	leuprorelin.ti,ab.	545
76	carcinil.ti,ab.	0
77	enanton*.ti,ab.	27
78	ginecrin.ti,ab.	0
79	leuplin.ti,ab.	16
80	Leuprolide/	3070
81	leuprolide.ti,ab.	2055
82	lucrin.ti,ab.	17
83	lupron.ti,ab.	188
84	provren.ti,ab.	0
85	procrin.ti,ab.	3
86	("tap 144" or tap144).ti,ab.	41
87	(a-43818 or a43818).ti,ab.	3
88	Trenantone.ti,ab.	2
89	staladex.ti,ab.	0
90	prostap.ti,ab.	6
91	Nafarelin/	327
92	nafarelin.ti,ab.	263
93	("76932-56-4" or "76932564").ti,ab.	0
94	("76932-60-0" or "76932600").ti,ab.	0
95	("86220-42-0" or "86220420").ti,ab.	0
96	("rs 94991 298" or rs94991298).ti,ab.	0
97	synarel.ti,ab.	13
98	deslorelin.ti,ab.	329
99	gonadorelin.ti,ab.	252
100	("33515-09-2" or "33515092").ti,ab.	0
101	("51952-41-1" or "51952411").ti,ab.	0
102	("52699-48-6" or "52699486").ti,ab.	0
103	cetrorelix.ti,ab.	531
104	cetrotide.ti,ab.	54
105	("NS 75A" or NS75A).ti,ab.	0
106	("NS 75B" or NS75B).ti,ab.	0
107	("SB 075" or SB075).ti,ab.	1
108	("SB 75" or SB75).ti,ab.	67
109	gonadoliberin.ti,ab.	155
110	kryptocur.ti,ab.	8
111	cetrorelix.ti,ab.	531
112	cetrotide.ti,ab.	54
113	antagon.ti,ab.	17
114	ganirelix.ti,ab.	169
115	("ORG 37462" or ORG37462).ti,ab.	3
116	orgalutran.ti,ab.	27
117	("RS 26306" or RS26306).ti,ab.	5
118	("AY 24031" or AY24031).ti,ab.	0



119 factrel.ti,ab. 13  
120 fertagyl.ti,ab. 12  
121 lutrelef.ti,ab. 5  
122 lutrepulse.ti,ab. 3  
123 relect.ti,ab. 11  
124 fertiral.ti,ab. 0  
125 (hoe471 or "hoe 471").ti,ab. 6  
126 relisorm.ti,ab. 4  
127 cystorelin.ti,ab. 19  
128 dirigestran.ti,ab. 5  
129 or/33-128 48595  
130 32 and 129 615  
131 limit 130 to english language 587  
132 limit 131 to yr="2020 -Current" 164

Ovid MEDLINE(R) Daily Update <September 06, 2023> 07.09.2023

1 Gender Dysphoria/ 2  
2 Gender Identity/ 10  
3 "Sexual and Gender Disorders"/0  
4 Transsexualism/ 3  
5 Transgender Persons/ 18  
6 Health Services for Transgender Persons/ 0  
7 exp Sex Reassignment Procedures/ 4  
8 (gender\* adj3 (dysphori\* or affirm\* or incongruen\* or identi\* or disorder\* or confus\* or minorit\* or queer\*)),tw.25  
9 (transgend\* or transex\* or transsex\* or transfem\* or transwom\* or transma\* or transmen\* or transperson\* or transpeopl\*).tw. 38  
10 (trans or crossgender\* or cross-gender\* or crossex\* or cross-sex\* or genderqueer\*).tw. 45  
11 ((sex or gender\*) adj3 (reassign\* or chang\* or transform\* or transition\*)),tw. 10  
12 (male-to-female or m2f or female-to-male or f2m).tw. 127  
13 or/1-12 222  
14 exp Infant/ or Infant Health/ or Infant Welfare/ 460  
15 (premat\* or pre-matur\* or preterm\* or pre-term\* or infan\* or newborn\* or new-born\* or perinat\* or peri-nat\* or neonat\* or neo-nat\* or baby\* or babies or toddler\*).ti,ab,in,jn. 625  
16 exp Child/ or exp Child Behavior/ or Child Health/ or Child Welfare/ 1127  
17 Minors/0  
18 (child\* or minor or minors or boy\* or girl\* or kid or kids or young\*).ti,ab,in,jn. 2518  
19 exp pediatrics/ 8  
20 (pediatric\* or paediatric\* or peadiatric\*).ti,ab,in,jn. 1292  
21 Adolescent/ or Adolescent Behavior/ or Adolescent Health/ 600  
22 Puberty/ 1  
23 (adolesc\* or pubescen\* or prepubescen\* or pre-pubescen\* or pubert\* or prepubert\* or pre-pubert\* or teen\* or preteen\* or pre-teen\* or juvenil\* or youth\* or under\*age\*).ti,ab,in,jn. 567  
24 Schools/ 49  
25 Child Day Care Centers/ or exp Nurseries, Infant/ or Schools, Nursery/ 0  
26 (pre-school\* or preschool\* or kindergar\* or daycare or day-care or nurser\* or school\* or pupil\* or student\*).ti,ab,jn. 420  
27 (("eight" or "nine" or "ten" or "eleven" or "twelve" or "thirteen" or "fourteen" or "fifteen" or "sixteen" or "seventeen" or "eighteen" or "nineteen") adj2 (year or years or age or ages or aged)).ti,ab. 58

28	((("8" or "9" or "10" or "11" or "12" or "13" or "14" or "15" or "16" or "17" or "18" or "19") adj2 (year or years or age or ages or aged)).ti,ab.	1013
29	or/14-28	4094
30	13 and 29	88
31	(transchild* or transyouth* or transteen* or transadoles* or transgirl* or transboy*).tw.	0
32	30 or 31	88
33	Gonadotropin-Releasing Hormone/	13
34	(pubert* adj3 block*).ti,ab.	1
35	((gonadotrophin or gonadotropin) and releasing).ti,ab.	13
36	(GnRH adj2 analog*).ti,ab.	0
37	GnRH*.ti,ab.	11
38	"GnRH agonist*".ti,ab.	3
39	Triptorelin Pamoate/	1
40	triptorelin.ti,ab.	0
41	arvekap.ti,ab.	0
42	("AY 25650" or AY25650).ti,ab.	0
43	("BIM 21003" or BIM21003).ti,ab.	0
44	("BN 52014" or BN52014).ti,ab.	0
45	("CL 118532" or CL118532).ti,ab.	0
46	Debio.ti,ab.	0
47	diphereline.ti,ab.	0
48	moapar.ti,ab.	0
49	pamorelin.ti,ab.	0
50	trelstar.ti,ab.	0
51	triptodur.ti,ab.	0
52	("WY 42422" or WY42422).ti,ab.	0
53	("WY 42462" or WY42462).ti,ab.	0
54	gonapeptyl.ti,ab.	0
55	decapeptyl.ti,ab.	1
56	salvacyl.ti,ab.	0
57	Buserelin/	0
58	buserelin.ti,ab.	0
59	bigonist.ti,ab.	0
60	("hoe 766" or hoe-766 or hoe766).ti,ab.	0
61	profact.ti,ab.	0
62	receptal.ti,ab.	0
63	suprecur.ti,ab.	0
64	suprefact.ti,ab.	0
65	tiloryth.ti,ab.	0
66	histrelin.ti,ab.	0
67	"LHRH-hydrogel implant".ti,ab.	0
68	("RL 0903" or RL0903).ti,ab.	0
69	("SPD 424" or SPD424).ti,ab.	0
70	goserelin.ti,ab.	0
71	Goserelin/	0
72	("ici 118630" or ici118630).ti,ab.	0
73	("ZD-9393" or ZD9393).ti,ab.	0
74	zoladex.ti,ab.	0
75	leuprorelin.ti,ab.	0
76	carcinil.ti,ab.	0
77	enanton*.ti,ab.	0
78	ginecrin.ti,ab.	0

79	leuplin.ti,ab.	0
80	Leuprolide/	1
81	leuprolide.ti,ab.	1
82	lucrin.ti,ab.	0
83	lupron.ti,ab.	0
84	provren.ti,ab.	0
85	procrin.ti,ab.	0
86	("tap 144" or tap144).ti,ab.	0
87	(a-43818 or a43818).ti,ab.	0
88	Trenantone.ti,ab.	0
89	staladex.ti,ab.	0
90	prostap.ti,ab.	0
91	Nafarelin/	0
92	nafarelin.ti,ab.	0
93	("76932-56-4" or "76932564").ti,ab.	0
94	("76932-60-0" or "76932600").ti,ab.	0
95	("86220-42-0" or "86220420").ti,ab.	0
96	("rs 94991 298" or rs94991298).ti,ab.	0
97	synarel.ti,ab.	0
98	deslorelin.ti,ab.	1
99	gonadorelin.ti,ab.	0
100	("33515-09-2" or "33515092").ti,ab.	0
101	("51952-41-1" or "51952411").ti,ab.	0
102	("52699-48-6" or "52699486").ti,ab.	0
103	cetrorelix.ti,ab.	0
104	cetrotide.ti,ab.	0
105	("NS 75A" or NS75A).ti,ab.	0
106	("NS 75B" or NS75B).ti,ab.	0
107	("SB 075" or SB075).ti,ab.	0
108	("SB 75" or SB75).ti,ab.	0
109	gonadoliberin.ti,ab.	0
110	kryptocur.ti,ab.	0
111	cetrorelix.ti,ab.	0
112	cetrotide.ti,ab.	0
113	antagon.ti,ab.	0
114	ganirelix.ti,ab.	0
115	("ORG 37462" or ORG37462).ti,ab.	0
116	orgalutran.ti,ab.	0
117	("RS 26306" or RS26306).ti,ab.	0
118	("AY 24031" or AY24031).ti,ab.	0
119	factrel.ti,ab.	0
120	fertagyl.ti,ab.	0
121	lutrelef.ti,ab.	0
122	lutrepulse.ti,ab.	0
123	relefact.ti,ab.	0
124	fertiral.ti,ab.	0
125	(hoe471 or "hoe 471").ti,ab.	0
126	relisorm.ti,ab.	0
127	cystorelin.ti,ab.	0
128	dirigestran.ti,ab.	0
129	or/33-128	18
130	32 and 129	2

131 limit 130 to english language 2  
132 limit 131 to yr="2020 -Current" 2

**EMBASE**

Search Name: Geschlechtsangleichende Hormontherapie bei Kindern und Jugendlichen mit Genderdysphorie

Date Run: 05/09/2023 16:56:59

No.	Query	Results
#136	#134 NOT #135	296
#135	'nonhuman'/de NOT ('human'/de AND 'nonhuman'/de)	5294753
#134	#133 NOT ('editorial'/it OR 'letter'/it OR 'conference abstract'/it OR 'conference paper'/it OR 'conference review'/it)	311
#133	#132 AND [english]/lim	452
#132	#28 AND #131	458
#131	#29 OR #30 OR #31 OR #32 OR #33 OR #34 OR #35 OR #36 OR #37 OR #38 OR #39 OR #40 OR #41 OR #42 OR #43 OR #44 OR #45 OR #46 OR #47 OR #48 OR #49 OR #50 OR #51 OR #52 OR #53 OR #54 OR #55 OR #56 OR #57 OR #58 OR #59 OR #60 OR #61 OR #62 OR #63 OR #64 OR #65 OR #66 OR #67 OR #68 OR #69 OR #70 OR #71 OR #72 OR #73 OR #74 OR #75 OR #76 OR #77 OR #78 OR #79 OR #80 OR #81 OR #82 OR #83 OR #84 OR #85 OR #86 OR #87 OR #88 OR #89 OR #90 OR #91 OR #92 OR #93 OR #94 OR #95 OR #96 OR #97 OR #98 OR #99 OR #100 OR #101 OR #102 OR #103 OR #104 OR #105 OR #106 OR #107 OR #108 OR #109 OR #110 OR #111 OR #112 OR #113 OR #114 OR #115 OR #116 OR #117 OR #118 OR #119 OR #120 OR #121 OR #122 OR #123 OR #124 OR #125 OR #126 OR #127 OR #128 OR #129 OR #130	12026
#130	dirigestran:ti,ab AND [24-07-2020]/sd NOT [05-09-2023]/sd	0
#129	cystorelin:ti,ab AND [24-07-2020]/sd NOT [05-09-2023]/sd	0
#128	relisorm:ti,ab AND [24-07-2020]/sd NOT [05-09-2023]/sd	0
#127	(hoe471:ti,ab OR 'hoe 471':ti,ab) AND [24-07-2020]/sd NOT [05-09-2023]/sd	0
#126	fertiral:ti,ab AND [24-07-2020]/sd NOT [05-09-2023]/sd	0

*Beyond NICE: Aktualisierte Übersicht zur Evidenzlage der Pubertätsblockade und Hormongabe bei Minderjährigen mit Geschlechtsdysphorie - Zepf et al., 2024*

No.	Query	Results
#125	relefact:ti,ab AND [24-07-2020]/sd NOT [05-09-2023]/sd	4
#124	lutrepulse:ti,ab AND [24-07-2020]/sd NOT [05-09-2023]/sd	3
#123	lutref:ti,ab AND [24-07-2020]/sd NOT [05-09-2023]/sd	1
#122	fertagyl:ti,ab AND [24-07-2020]/sd NOT [05-09-2023]/sd	5
#121	factrel:ti,ab AND [24-07-2020]/sd NOT [05-09-2023]/sd	0
#120	('ay 24031':ti,ab OR ay24031:ti,ab) AND [24-07-2020]/sd NOT [05-09-2023]/sd	0
#119	('rs 26306':ti,ab OR rs26306:ti,ab) AND [24-07-2020]/sd NOT [05-09-2023]/sd	0
#118	orgalutran:ti,ab AND [24-07-2020]/sd NOT [05-09-2023]/sd	9
#117	'orgalutran'/de AND [24-07-2020]/sd NOT [05-09-2023]/sd	361
#116	('org 37462':ti,ab OR org37462:ti,ab) AND [24-07-2020]/sd NOT [05-09-2023]/sd	0
#115	'ganirelix':ti,ab AND [24-07-2020]/sd NOT [05-09-2023]/sd	59
#114	'ganirelix'/de AND [24-07-2020]/sd NOT [05-09-2023]/sd	361
#113	antagon:ti,ab AND [24-07-2020]/sd NOT [05-09-2023]/sd	2
#112	cetrotide:ti,ab AND [24-07-2020]/sd NOT [05-09-2023]/sd	29
#111	cetrorelix:ti,ab AND [24-07-2020]/sd NOT [05-09-2023]/sd	99
#110	kryptocur:ti,ab AND [24-07-2020]/sd NOT [05-09-2023]/sd	1
#109	'gonadorelin':ti,ab AND [24-07-2020]/sd NOT [05-09-2023]/sd	60
#108	('sb 75':ti,ab OR sb75:ti,ab) AND [24-07-2020]/sd NOT [05-09-2023]/sd	1

*Beyond NICE: Aktualisierte Übersicht zur Evidenzlage der Pubertätsblockade und Hormongabe bei Minderjährigen mit Geschlechtsdysphorie - Zepf et al., 2024*

No.	Query	Results
#107	('sb 075':ti,ab OR sb075:ti,ab) AND [24-07-2020]/sd NOT [05-09-2023]/sd	0
#106	('ns 75b':ti,ab OR ns75b:ti,ab) AND [24-07-2020]/sd NOT [05-09-2023]/sd	0
#105	('ns 75a':ti,ab OR ns75a:ti,ab) AND [24-07-2020]/sd NOT [05-09-2023]/sd	0
#104	cetrotide:ti,ab AND [24-07-2020]/sd NOT [05-09-2023]/sd	29
#103	'cetorelix':ti,ab AND [24-07-2020]/sd NOT [05-09-2023]/sd	99
#102	'cetorelix'/de AND [24-07-2020]/sd NOT [05-09-2023]/sd	749
#101	('52699-48-6':ti,ab OR '52699486':ti,ab) AND [24-07-2020]/sd NOT [05-09-2023]/sd	0
#100	('51952-41-1':ti,ab OR '51952411':ti,ab) AND [24-07-2020]/sd NOT [05-09-2023]/sd	0
#99	('33515-09-2':ti,ab OR '33515092':ti,ab) AND [24-07-2020]/sd NOT [05-09-2023]/sd	0
#98	'gonadorelin':ti,ab AND [24-07-2020]/sd NOT [05-09-2023]/sd	60
#97	'deslorelin':ti,ab AND [24-07-2020]/sd NOT [05-09-2023]/sd	88
#96	'deslorelin'/de AND [24-07-2020]/sd NOT [05-09-2023]/sd	123
#95	synarel:ti,ab AND [24-07-2020]/sd NOT [05-09-2023]/sd	1
#94	('rs 94991 298':ti,ab OR rs94991298:ti,ab) AND [24-07-2020]/sd NOT [05-09-2023]/sd	0
#93	('86220-42-0':ti,ab OR '86220420':ti,ab) AND [24-07-2020]/sd NOT [05-09-2023]/sd	0
#92	('76932-60-0':ti,ab OR '76932600':ti,ab) AND [24-07-2020]/sd NOT [05-09-2023]/sd	0
#91	('76932-56-4':ti,ab OR '76932564':ti,ab) AND [24-07-2020]/sd NOT [05-09-2023]/sd	0
#90	nafarelin:ti,ab AND [24-07-2020]/sd NOT [05-09-2023]/sd	11

*Beyond NICE: Aktualisierte Übersicht zur Evidenzlage der Pubertätsblockade und Hormongabe bei Minderjährigen mit Geschlechtsdysphorie - Zepf et al., 2024*

No.	Query	Results
#89	(nafarelin AND 'acetate'/de OR 'nafarelin'/de) AND [24-07-2020]/sd NOT [05-09-2023]/sd	52
#88	prostap:ti,ab AND [24-07-2020]/sd NOT [05-09-2023]/sd	0
#87	staladex:ti,ab AND [24-07-2020]/sd NOT [05-09-2023]/sd	0
#86	trenantone:ti,ab AND [24-07-2020]/sd NOT [05-09-2023]/sd	1
#85	('a 43818':ti,ab OR a43818:ti,ab) AND [24-07-2020]/sd NOT [05-09-2023]/sd	0
#84	('tap 144':ti,ab OR tap144:ti,ab) AND [24-07-2020]/sd NOT [05-09-2023]/sd	3
#83	procrin:ti,ab AND [24-07-2020]/sd NOT [05-09-2023]/sd	3
#82	provren:ti,ab AND [24-07-2020]/sd NOT [05-09-2023]/sd	0
#81	lupron:ti,ab AND [24-07-2020]/sd NOT [05-09-2023]/sd	77
#80	lucrin:ti,ab AND [24-07-2020]/sd NOT [05-09-2023]/sd	6
#79	leuprolide:ti,ab AND [24-07-2020]/sd NOT [05-09-2023]/sd	500
#78	leuplin:ti,ab AND [24-07-2020]/sd NOT [05-09-2023]/sd	2
#77	ginecrin:ti,ab AND [24-07-2020]/sd NOT [05-09-2023]/sd	0
#76	enanton*:ti,ab AND [24-07-2020]/sd NOT [05-09-2023]/sd	5
#75	carcinil:ti,ab AND [24-07-2020]/sd NOT [05-09-2023]/sd	0
#74	'leuprorelin':ti,ab AND [24-07-2020]/sd NOT [05-09-2023]/sd	145
#73	'leuprorelin'/de AND [24-07-2020]/sd NOT [05-09-2023]/sd	2053
#72	zoladex:ti,ab AND [24-07-2020]/sd NOT [05-09-2023]/sd	19

*Beyond NICE: Aktualisierte Übersicht zur Evidenzlage der Pubertätsblockade und Hormongabe bei Minderjährigen mit Geschlechtsdysphorie - Zepf et al., 2024*

No.	Query	Results
#71	('zd-9393':ti,ab OR zd9393:ti,ab) AND [24-07-2020]/sd NOT [05-09-2023]/sd	0
#70	('ici 118630':ti,ab OR ici118630:ti,ab) AND [24-07-2020]/sd NOT [05-09-2023]/sd	0
#69	'goserelin'/de AND [24-07-2020]/sd NOT [05-09-2023]/sd	1003
#68	goserelin:ti,ab AND [24-07-2020]/sd NOT [05-09-2023]/sd	231
#67	('spd 424':ti,ab OR spd424:ti,ab) AND [24-07-2020]/sd NOT [05-09-2023]/sd	0
#66	('rl 0903':ti,ab OR rl0903:ti,ab) AND [24-07-2020]/sd NOT [05-09-2023]/sd	0
#65	'lhrh-hydrogel implant':ti,ab AND [24-07-2020]/sd NOT [05-09-2023]/sd	0
#64	histrelin:ti,ab AND [24-07-2020]/sd NOT [05-09-2023]/sd	46
#63	'histrelin'/de AND [24-07-2020]/sd NOT [05-09-2023]/sd	113
#62	tiloryth:ti,ab AND [24-07-2020]/sd NOT [05-09-2023]/sd	0
#61	suprefact:ti,ab AND [24-07-2020]/sd NOT [05-09-2023]/sd	3
#60	suprecur:ti,ab AND [24-07-2020]/sd NOT [05-09-2023]/sd	0
#59	receptal:ti,ab AND [24-07-2020]/sd NOT [05-09-2023]/sd	12
#58	profact:ti,ab AND [24-07-2020]/sd NOT [05-09-2023]/sd	0
#57	('hoe 766':ti,ab OR hoe766:ti,ab) AND [24-07-2020]/sd NOT [05-09-2023]/sd	0
#56	bigonist:ti,ab AND [24-07-2020]/sd NOT [05-09-2023]/sd	0
#55	buserelin:ti,ab AND [24-07-2020]/sd NOT [05-09-2023]/sd	96
#54	(buserelin AND 'acetate'/de OR 'buserelin'/de) AND [24-07-2020]/sd NOT [05-09-2023]/sd	240



*Beyond NICE: Aktualisierte Übersicht zur Evidenzlage der Pubertätsblockade und Hormongabe bei Minderjährigen mit Geschlechtsdysphorie - Zepf et al., 2024*

No.	Query	Results
#53	salvacyl:ti,ab AND [24-07-2020]/sd NOT [05-09-2023]/sd	0
#52	decapeptyl:ti,ab AND [24-07-2020]/sd NOT [05-09-2023]/sd	33
#51	gonapeptyl:ti,ab AND [24-07-2020]/sd NOT [05-09-2023]/sd	9
#50	('wy 42462':ti,ab OR wy42462:ti,ab) AND [24-07-2020]/sd NOT [05-09-2023]/sd	0
#49	('wy 42422':ti,ab OR wy42422:ti,ab) AND [24-07-2020]/sd NOT [05-09-2023]/sd	0
#48	triptodur:ti,ab AND [24-07-2020]/sd NOT [05-09-2023]/sd	0
#47	trelstar:ti,ab AND [24-07-2020]/sd NOT [05-09-2023]/sd	0
#46	pamorelin:ti,ab AND [24-07-2020]/sd NOT [05-09-2023]/sd	0
#45	moapar:ti,ab AND [24-07-2020]/sd NOT [05-09-2023]/sd	0
#44	diphereline:ti,ab AND [24-07-2020]/sd NOT [05-09-2023]/sd	9
#43	debio:ti,ab AND [24-07-2020]/sd NOT [05-09-2023]/sd	95
#42	('cl 118532' OR cl118532:ti,ab) AND [24-07-2020]/sd NOT [05-09-2023]/sd	0
#41	('bn 52014' OR bn52014:ti,ab) AND [24-07-2020]/sd NOT [05-09-2023]/sd	0
#40	('bim 21003' OR bim21003:ti,ab) AND [24-07-2020]/sd NOT [05-09-2023]/sd	0
#39	('ay 25650':ti,ab OR ay25650:ti,ab) AND [24-07-2020]/sd NOT [05-09-2023]/sd	0
#38	arvekap:ti,ab AND [24-07-2020]/sd NOT [05-09-2023]/sd	0
#37	'triptorelin':ti,ab AND [24-07-2020]/sd NOT [05-09-2023]/sd	272
#36	'triptorelin'/de AND [24-07-2020]/sd NOT [05-09-2023]/sd	1246

No.	Query	Results
#35	('gonadorelin agonist'/exp OR 'gonadorelin derivative'/de OR 'gonadorelin acetate'/de) AND [24-07-2020]/sd NOT [05-09-2023]/sd	3535
#34	'gnrh agonist*':ti,ab AND [24-07-2020]/sd NOT [05-09-2023]/sd	1308
#33	gnrh*':ti,ab AND [24-07-2020]/sd NOT [05-09-2023]/sd	5097
#32	((gnrh NEXT/2 analog*):ti,ab) AND [24-07-2020]/sd NOT [05-09-2023]/sd	486
#31	(gonadotrophin:ti,ab OR gonadotropin:ti,ab) AND releasing:ti,ab AND [24-07-2020]/sd NOT [05-09-2023]/sd	3337
#30	((pubert* NEXT/3 block*):ti,ab) AND [24-07-2020]/sd NOT [05-09-2023]/sd	103
#29	'gonadorelin'/de AND [24-07-2020]/sd NOT [05-09-2023]/sd	3915
#28	#26 OR #27	97495
#27	(transchild*':ti,ab OR transyouth*':ti,ab OR transteen*':ti,ab OR transadoles*':ti,ab OR transgirl*':ti,ab OR transboy*':ti,ab) AND [24-07-2020]/sd NOT [05-09-2023]/sd	16
#26	#13 AND #25	97495
#25	#14 OR #15 OR #16 OR #17 OR #18 OR #19 OR #20 OR #21 OR #22 OR #23 OR #24	3166012
#24	((('8' OR '9' OR '10' OR '11' OR '12' OR '13' OR '14' OR '15' OR '16' OR '17' OR '18' OR '19') NEAR/2 (year OR years OR age OR ages OR aged)):ti,ab) AND [24-07-2020]/sd NOT [05-09-2023]/sd	578310
#23	((('eight' OR 'nine' OR 'ten' OR 'eleven' OR 'twelve' OR 'thirteen' OR 'fourteen' OR 'fifteen' OR 'sixteen' OR 'seventeen' OR 'eighteen' OR 'nineteen') NEAR/2 (year OR years OR age OR ages OR aged)):ti,ab) AND [24-07-2020]/sd NOT [05-09-2023]/sd	27376
#22	('pre school*':ti,ab,jt OR preschool*':ti,ab,jt OR kindergar*':ti,ab,jt OR daycare:ti,ab,jt OR 'day care':ti,ab,jt OR nurser*':ti,ab,jt OR school*':ti,ab,jt OR pupil*':ti,ab,jt OR student*':ti,ab,jt) AND [24-07-2020]/sd NOT [05-09-2023]/sd	193763
#21	('school' OR 'high school' OR 'kindergarten' OR 'middle school' OR 'primary school' OR 'nursery school' OR 'day care') AND [24-07-2020]/sd NOT [05-09-2023]/sd	2040284

No.	Query	Results
#20	(adolescen*:ab,ti,ad,jt OR pubescen*:ab,ti,ad,jt OR prepubescen*:ab,ti,ad,jt OR 'pre pubescen*':ab,ti,ad,jt OR pubert*:ab,ti,ad,jt OR prepubert*:ab,ti,ad,jt OR 'pre pubert*':ab,ti,ad,jt OR teen*:ab,ti,ad,jt OR preteen*:ab,ti,ad,jt OR 'pre teen*':ab,ti,ad,jt OR juvenil*:ab,ti,ad,jt OR youth*:ab,ti,ad,jt OR under*age*:ab,ti,ad,jt) AND [24-07-2020]/sd NOT [05-09-2023]/sd	193116
#19	('adolescence'/exp OR 'adolescent behavior'/exp OR 'adolescent health' OR 'high school student' OR 'middle school student') AND [24-07-2020]/sd NOT [05-09-2023]/sd	33514
#18	(pediatric*:ti,ab,ad,jt OR paediatric*:ti,ab,ad,jt OR peadiatric*:ti,ab,ad,jt) AND [24-07-2020]/sd NOT [05-09-2023]/sd	457775
#17	'pediatrics'/exp AND [24-07-2020]/sd NOT [05-09-2023]/sd	23879
#16	(child*:ti,ab,ad,jt OR minor:ti,ab,ad,jt OR minors:ti,ab,ad,jt OR boy*:ti,ab,ad,jt OR girl*:ti,ab,ad,jt OR kid:ti,ab,ad,jt OR kids:ti,ab,ad,jt OR young*:ti,ab,ad,jt) AND [24-07-2020]/sd NOT [05-09-2023]/sd	953142
#15	(prematu*:ti,ab,jt,ad OR 'pre matur*':ti,ab,jt,ad OR preterm*:ti,ab,jt,ad OR 'pre term*':ti,ab,jt,ad OR infan*:ti,ab,jt,ad OR newborn*:ti,ab,jt,ad OR 'new born*':ti,ab,jt,ad OR perinat*:ti,ab,jt,ad OR 'peri nat*':ti,ab,jt,ad OR neonat*:ti,ab,jt,ad OR 'neo nat*':ti,ab,jt,ad OR baby*:ti,ab,jt,ad OR babies:ti,ab,jt,ad OR toddler*:ti,ab,jt,ad) AND [24-07-2020]/sd NOT [05-09-2023]/sd	262766
#14	('juvenile'/exp OR 'child behavior'/exp OR 'child welfare'/exp OR 'child health'/exp OR 'infant welfare'/exp OR 'minor (person)'/exp OR 'elementary student'/exp OR 'adolescent health') AND [24-07-2020]/sd NOT [05-09-2023]/sd	698912
#13	#1 OR #2 OR #3 OR #4 OR #5 OR #6 OR #7 OR #8 OR #9 OR #10 OR #11 OR #12	166641
#12	('male to female':ti,ab OR m2f:ti,ab OR 'female to male':ti,ab OR f2m:ti,ab) AND [24-07-2020]/sd NOT [05-09-2023]/sd	6688
#11	((sex OR gender*) NEAR/3 (reassign* OR chang* OR transform* OR transition*)):ti,ab) AND [24-07-2020]/sd NOT [05-09-2023]/sd	3298
#10	(trans:ti,ab OR crossgender*:ti,ab OR 'cross gender*':ti,ab OR crossex*:ti,ab OR 'cross sex*':ti,ab OR genderqueer*:ti,ab) AND [24-07-2020]/sd NOT [05-09-2023]/sd	30662
#9	(transgend*:ti,ab OR transex*:ti,ab OR transsex*:ti,ab OR transfem*:ti,ab OR transwom*:ti,ab OR transma*:ti,ab OR transmen*:ti,ab OR transperson*:ti,ab OR transpeopl*:ti,ab) AND [24-07-2020]/sd NOT [05-09-2023]/sd	11538

No.	Query	Results
#8	((gender* NEAR/3 (dysphori* OR incongru* OR identi* OR disorder* OR confus* OR minorit* OR queer*)):ti,ab) NOT [05-09-2023]/sd AND [24-07-2020]/sd NOT [06-09-2023]/sd	7673
#7	('gender reassignment'/exp OR 'sex transformation'/de) AND [24-07-2020]/sd NOT [06-09-2023]/sd	1039
#6	'health service' AND [24-07-2020]/sd NOT [05-09-2023]/sd	102261
#5	'transgender'/exp AND [24-07-2020]/sd NOT [05-09-2023]/sd	7672
#4	'transsexualism' AND [24-07-2020]/sd NOT [05-09-2023]/sd	489
#3	'sexual dysfunction' AND [24-07-2020]/sd NOT [05-09-2023]/sd	8083
#2	'gender identity' AND [24-07-2020]/sd NOT [05-09-2023]/sd	6084
#1	'gender dysphoria'/exp AND [24-07-2020]/sd NOT [06-09-2023]/sd	1712

SearchString #136:

Query(('gender dysphoria'/exp AND [24-07-2020]/sd NOT [06-09-2023]/sd OR ('gender identity' AND [24-07-2020]/sd NOT [05-09-2023]/sd) OR ('sexual dysfunction' AND [24-07-2020]/sd NOT [05-09-2023]/sd) OR ('transsexualism' AND [24-07-2020]/sd NOT [05-09-2023]/sd) OR ('transgender'/exp AND [24-07-2020]/sd NOT [05-09-2023]/sd) OR ('health service' AND [24-07-2020]/sd NOT [05-09-2023]/sd) OR (('gender reassignment'/exp OR 'sex transformation'/de) AND [24-07-2020]/sd NOT [06-09-2023]/sd) OR (((gender\* NEAR/3 (dysphori\* OR incongru\* OR identi\* OR disorder\* OR confus\* OR minorit\* OR queer\*)):ti,ab) NOT [05-09-2023]/sd AND [24-07-2020]/sd NOT [06-09-2023]/sd) OR ((transgend\*:ti,ab OR transex\*:ti,ab OR transsex\*:ti,ab OR transfem\*:ti,ab OR transwom\*:ti,ab OR transma\*:ti,ab OR transmen\*:ti,ab OR transperson\*:ti,ab OR transpeopl\*:ti,ab) AND [24-07-2020]/sd NOT [05-09-2023]/sd) OR ((trans:ti,ab OR crossgender\*:ti,ab OR 'cross gender\*':ti,ab OR crosssex\*:ti,ab OR 'cross sex\*':ti,ab OR genderqueer\*:ti,ab) AND [24-07-2020]/sd NOT [05-09-2023]/sd) OR (((sex OR gender\*) NEAR/3 (reassign\* OR chang\* OR transform\* OR transition\*)):ti,ab) AND [24-07-2020]/sd NOT [05-09-2023]/sd) OR (('male to female':ti,ab OR m2f:ti,ab OR 'female to male':ti,ab OR f2m:ti,ab) AND [24-07-2020]/sd NOT [05-09-2023]/sd)) AND (('juvenile'/exp OR 'child behavior'/exp OR 'child welfare'/exp OR 'child health'/exp OR 'infant welfare'/exp OR 'minor (person)'/exp OR 'elementary student'/exp OR 'adolescent health') AND [24-07-2020]/sd NOT [05-09-2023]/sd OR ((premat\*:ti,ab,jt,ad OR 'pre matur\*':ti,ab,jt,ad OR preterm\*:ti,ab,jt,ad OR 'pre term\*':ti,ab,jt,ad OR infan\*:ti,ab,jt,ad OR newborn\*:ti,ab,jt,ad OR 'new born\*':ti,ab,jt,ad OR perinat\*:ti,ab,jt,ad OR 'peri nat\*':ti,ab,jt,ad OR neonat\*:ti,ab,jt,ad OR 'neo nat\*':ti,ab,jt,ad OR baby\*:ti,ab,jt,ad OR babies:ti,ab,jt,ad OR toddler\*:ti,ab,jt,ad) AND [24-07-2020]/sd NOT [05-09-2023]/sd) OR ((child\*:ti,ab,ad,jt OR minor:ti,ab,ad,jt OR minors:ti,ab,ad,jt OR boy\*:ti,ab,ad,jt OR girl\*:ti,ab,ad,jt OR kid:ti,ab,ad,jt OR kids:ti,ab,ad,jt OR young\*:ti,ab,ad,jt) AND [24-07-2020]/sd NOT [05-09-2023]/sd) OR ('pediatrics'/exp AND [24-07-2020]/sd NOT [05-09-2023]/sd) OR ((pediatric\*:ti,ab,ad,jt OR paediatric\*:ti,ab,ad,jt OR peadiatric\*:ti,ab,ad,jt) AND [24-07-2020]/sd NOT [05-09-2023]/sd) OR (('adolescence'/exp OR 'adolescent behavior'/exp OR 'adolescent health' OR 'high school student' OR 'middle school student') AND [24-07-2020]/sd NOT [05-09-2023]/sd) OR ((adolesc\*:ab,ti,ad,jt OR pubescen\*:ab,ti,ad,jt OR prepubescen\*:ab,ti,ad,jt OR 'pre pubescen\*':ab,ti,ad,jt OR pubert\*:ab,ti,ad,jt OR prepubert\*:ab,ti,ad,jt OR 'pre pubert\*':ab,ti,ad,jt OR teen\*:ab,ti,ad,jt OR preteen\*:ab,ti,ad,jt

OR 'pre teen\*':ab,ti,ad,jt OR juvenil\*':ab,ti,ad,jt OR youth\*':ab,ti,ad,jt OR under\*age\*':ab,ti,ad,jt) AND [24-07-2020]/sd NOT [05-09-2023]/sd) OR (('school' OR 'high school' OR 'kindergarten' OR 'middle school' OR 'primary school' OR 'nursery school' OR 'day care') AND [24-07-2020]/sd NOT [05-09-2023]/sd) OR (('pre school\*':ti,ab,jt OR preschool\*':ti,ab,jt OR kindergar\*':ti,ab,jt OR daycare:ti,ab,jt OR 'day care':ti,ab,jt OR nurser\*':ti,ab,jt OR school\*':ti,ab,jt OR pupil\*':ti,ab,jt OR student\*':ti,ab,jt) AND [24-07-2020]/sd NOT [05-09-2023]/sd) OR (((('eight' OR 'nine' OR 'ten' OR 'eleven' OR 'twelve' OR 'thirteen' OR 'fourteen' OR 'fifteen' OR 'sixteen' OR 'seventeen' OR 'eighteen' OR 'nineteen') NEAR/2 (year OR years OR age OR ages OR aged)):ti,ab) AND [24-07-2020]/sd NOT [05-09-2023]/sd) OR (((('8' OR '9' OR '10' OR '11' OR '12' OR '13' OR '14' OR '15' OR '16' OR '17' OR '18' OR '19') NEAR/2 (year OR years OR age OR ages OR aged)):ti,ab) AND [24-07-2020]/sd NOT [05-09-2023]/sd) OR ((transchild\*':ti,ab OR transyouth\*':ti,ab OR transteen\*':ti,ab OR transadoles\*':ti,ab OR transgirl\*':ti,ab OR transboy\*':ti,ab) AND [24-07-2020]/sd NOT [05-09-2023]/sd)) AND ('gonadorelin'/de AND [24-07-2020]/sd NOT [05-09-2023]/sd) OR (((pubert\* NEXT/3 block\*):ti,ab) AND [24-07-2020]/sd NOT [05-09-2023]/sd) OR ((gonadotrophin:ti,ab OR gonadotropin:ti,ab) AND releasing:ti,ab AND [24-07-2020]/sd NOT [05-09-2023]/sd) OR (((gnrh NEXT/2 analog\*):ti,ab) AND [24-07-2020]/sd NOT [05-09-2023]/sd) OR (gnrh\*':ti,ab AND [24-07-2020]/sd NOT [05-09-2023]/sd) OR ('gnrh agonist\*':ti,ab AND [24-07-2020]/sd NOT [05-09-2023]/sd) OR (('gonadorelin agonist'/exp OR 'gonadorelin derivative'/de OR 'gonadorelin acetate'/de) AND [24-07-2020]/sd NOT [05-09-2023]/sd) OR ('triptorelin'/de AND [24-07-2020]/sd NOT [05-09-2023]/sd) OR ('triptorelin':ti,ab AND [24-07-2020]/sd NOT [05-09-2023]/sd) OR (arvekap:ti,ab AND [24-07-2020]/sd NOT [05-09-2023]/sd) OR (('ay 25650':ti,ab OR ay25650:ti,ab) AND [24-07-2020]/sd NOT [05-09-2023]/sd) OR (('bim 21003' OR bim21003:ti,ab) AND [24-07-2020]/sd NOT [05-09-2023]/sd) OR (('bn 52014' OR bn52014:ti,ab) AND [24-07-2020]/sd NOT [05-09-2023]/sd) OR (('cl 118532' OR cl118532:ti,ab) AND [24-07-2020]/sd NOT [05-09-2023]/sd) OR (debio:ti,ab AND [24-07-2020]/sd NOT [05-09-2023]/sd) OR (diphereline:ti,ab AND [24-07-2020]/sd NOT [05-09-2023]/sd) OR (moapar:ti,ab AND [24-07-2020]/sd NOT [05-09-2023]/sd) OR (pamorelin:ti,ab AND [24-07-2020]/sd NOT [05-09-2023]/sd) OR (trelstar:ti,ab AND [24-07-2020]/sd NOT [05-09-2023]/sd) OR (triptodur:ti,ab AND [24-07-2020]/sd NOT [05-09-2023]/sd) OR (('wy 42422':ti,ab OR wy42422:ti,ab) AND [24-07-2020]/sd NOT [05-09-2023]/sd) OR (('wy 42462':ti,ab OR wy42462:ti,ab) AND [24-07-2020]/sd NOT [05-09-2023]/sd) OR (gonapeptyl:ti,ab AND [24-07-2020]/sd NOT [05-09-2023]/sd) OR (decapeptyl:ti,ab AND [24-07-2020]/sd NOT [05-09-2023]/sd) OR (salvacyl:ti,ab AND [24-07-2020]/sd NOT [05-09-2023]/sd) OR ((buserelin AND 'acetate'/de OR 'buserelin'/de) AND [24-07-2020]/sd NOT [05-09-2023]/sd) OR (buserelin:ti,ab AND [24-07-2020]/sd NOT [05-09-2023]/sd) OR (bigonist:ti,ab AND [24-07-2020]/sd NOT [05-09-2023]/sd) OR (('hoe 766':ti,ab OR hoe766:ti,ab) AND [24-07-2020]/sd NOT [05-09-2023]/sd) OR (profact:ti,ab AND [24-07-2020]/sd NOT [05-09-2023]/sd) OR (receptal:ti,ab AND [24-07-2020]/sd NOT [05-09-2023]/sd) OR (suprecur:ti,ab AND [24-07-2020]/sd NOT [05-09-2023]/sd) OR (suprefact:ti,ab AND [24-07-2020]/sd NOT [05-09-2023]/sd) OR (tiloryth:ti,ab AND [24-07-2020]/sd NOT [05-09-2023]/sd) OR ('histrelin'/de AND [24-07-2020]/sd NOT [05-09-2023]/sd) OR (histrelin:ti,ab AND [24-07-2020]/sd NOT [05-09-2023]/sd) OR ('lhrh-hydrogel implant':ti,ab AND [24-07-2020]/sd NOT [05-09-2023]/sd) OR (('rl 0903':ti,ab OR rl0903:ti,ab) AND [24-07-2020]/sd NOT [05-09-2023]/sd) OR (('spd 424':ti,ab OR spd424:ti,ab) AND [24-07-2020]/sd NOT [05-09-2023]/sd) OR (goserelin:ti,ab AND [24-07-2020]/sd NOT [05-09-2023]/sd) OR ('goserelin'/de AND [24-07-2020]/sd NOT [05-09-2023]/sd) OR (('ici 118630':ti,ab OR ici118630:ti,ab) AND [24-07-2020]/sd NOT [05-09-2023]/sd) OR (('zd-9393':ti,ab OR zd9393:ti,ab) AND [24-07-2020]/sd NOT [05-09-2023]/sd) OR (zoladex:ti,ab AND [24-07-2020]/sd NOT [05-09-2023]/sd) OR ('leuprorelin'/de AND [24-07-2020]/sd NOT [05-09-2023]/sd) OR ('leuprorelin':ti,ab AND [24-07-2020]/sd NOT [05-09-2023]/sd) OR (carcinil:ti,ab AND [24-07-2020]/sd NOT [05-09-2023]/sd) OR (enanton\*':ti,ab AND [24-07-2020]/sd NOT [05-09-2023]/sd) OR (ginecrin:ti,ab AND [24-07-2020]/sd NOT [05-09-2023]/sd) OR (leuplin:ti,ab AND [24-07-2020]/sd NOT [05-09-2023]/sd) OR (leuprolide:ti,ab AND [24-07-2020]/sd NOT [05-09-2023]/sd) OR (lucrin:ti,ab AND [24-07-2020]/sd NOT [05-09-2023]/sd) OR (lupron:ti,ab AND [24-07-2020]/sd NOT [05-09-2023]/sd) OR (provren:ti,ab AND [24-07-2020]/sd NOT [05-09-2023]/sd) OR (procrin:ti,ab AND [24-07-2020]/sd NOT [05-09-2023]/sd) OR (('tap 144':ti,ab OR tap144:ti,ab) AND [24-07-2020]/sd NOT [05-09-2023]/sd) OR (('a 43818':ti,ab OR a43818:ti,ab) AND [24-07-2020]/sd NOT [05-09-2023]/sd) OR (trenantone:ti,ab AND [24-07-2020]/sd NOT [05-09-2023]/sd) OR (staladex:ti,ab AND [24-07-2020]/sd NOT [05-09-2023]/sd) OR (prostap:ti,ab AND [24-07-2020]/sd NOT [05-09-2023]/sd) OR ((nafarelin AND 'acetate'/de OR 'nafarelin'/de) AND [24-07-2020]/sd NOT [05-09-2023]/sd) OR (nafarelin:ti,ab AND [24-07-2020]/sd NOT [05-09-2023]/sd) OR (('76932-56-4':ti,ab OR '76932564':ti,ab) AND [24-07-2020]/sd NOT [05-09-2023]/sd) OR (('76932-60-0':ti,ab OR '76932600':ti,ab) AND [24-07-2020]/sd NOT [05-09-2023]/sd) OR (('86220-42-0':ti,ab OR '86220420':ti,ab) AND [24-07-2020]/sd NOT [05-09-2023]/sd) OR (('rs 94991 298':ti,ab OR rs94991298:ti,ab) AND [24-07-2020]/sd NOT [05-09-2023]/sd) OR (synarel:ti,ab AND [24-07-2020]/sd NOT [05-09-2023]/sd) OR ('deslorelin'/de AND [24-07-2020]/sd NOT [05-09-2023]/sd) OR ('deslorelin':ti,ab AND

[24-07-2020]/sd NOT [05-09-2023]/sd) OR (('33515-09-2':ti,ab OR '33515092':ti,ab) AND [24-07-2020]/sd NOT [05-09-2023]/sd) OR (('51952-41-1':ti,ab OR '51952411':ti,ab) AND [24-07-2020]/sd NOT [05-09-2023]/sd) OR (('52699-48-6':ti,ab OR '52699486':ti,ab) AND [24-07-2020]/sd NOT [05-09-2023]/sd) OR ('cetorelix'/de AND [24-07-2020]/sd NOT [05-09-2023]/sd) OR ('cetorelix':ti,ab AND [24-07-2020]/sd NOT [05-09-2023]/sd) OR (('ns 75a':ti,ab OR ns75a:ti,ab) AND [24-07-2020]/sd NOT [05-09-2023]/sd) OR (('ns 75b':ti,ab OR ns75b:ti,ab) AND [24-07-2020]/sd NOT [05-09-2023]/sd) OR (('sb 075':ti,ab OR sb075:ti,ab) AND [24-07-2020]/sd NOT [05-09-2023]/sd) OR (('sb 75':ti,ab OR sb75:ti,ab) AND [24-07-2020]/sd NOT [05-09-2023]/sd) OR ('gonadorelin':ti,ab AND [24-07-2020]/sd NOT [05-09-2023]/sd) OR (kryptocur:ti,ab AND [24-07-2020]/sd NOT [05-09-2023]/sd) OR (cetorelix:ti,ab AND [24-07-2020]/sd NOT [05-09-2023]/sd) OR (cetrotide:ti,ab AND [24-07-2020]/sd NOT [05-09-2023]/sd) OR (antagon:ti,ab AND [24-07-2020]/sd NOT [05-09-2023]/sd) OR ('ganirelix'/de AND [24-07-2020]/sd NOT [05-09-2023]/sd) OR ('ganirelix':ti,ab AND [24-07-2020]/sd NOT [05-09-2023]/sd) OR (('org 37462':ti,ab OR org37462:ti,ab) AND [24-07-2020]/sd NOT [05-09-2023]/sd) OR ('orgalutran'/de AND [24-07-2020]/sd NOT [05-09-2023]/sd) OR (orgalutran:ti,ab AND [24-07-2020]/sd NOT [05-09-2023]/sd) OR (('rs 26306':ti,ab OR rs26306:ti,ab) AND [24-07-2020]/sd NOT [05-09-2023]/sd) OR (('ay 24031':ti,ab OR ay24031:ti,ab) AND [24-07-2020]/sd NOT [05-09-2023]/sd) OR (factrel:ti,ab AND [24-07-2020]/sd NOT [05-09-2023]/sd) OR (fertagyl:ti,ab AND [24-07-2020]/sd NOT [05-09-2023]/sd) OR (lutrelef:ti,ab AND [24-07-2020]/sd NOT [05-09-2023]/sd) OR (lutrepulse:ti,ab AND [24-07-2020]/sd NOT [05-09-2023]/sd) OR (relefact:ti,ab AND [24-07-2020]/sd NOT [05-09-2023]/sd) OR (fertiral:ti,ab AND [24-07-2020]/sd NOT [05-09-2023]/sd) OR ((hoe471:ti,ab OR 'hoe 471':ti,ab) AND [24-07-2020]/sd NOT [05-09-2023]/sd) OR (relisorm:ti,ab AND [24-07-2020]/sd NOT [05-09-2023]/sd) OR (cystorelin:ti,ab AND [24-07-2020]/sd NOT [05-09-2023]/sd) OR (dirigestran:ti,ab AND [24-07-2020]/sd NOT [05-09-2023]/sd)) AND [english]/lim NOT ('editorial'/it OR 'letter'/it OR 'conference abstract'/it OR 'conference paper'/it OR 'conference review'/it) NOT ('nonhuman'/de NOT ('human'/de AND 'nonhuman'/de))

## COCHRANE

Search Name: Geschlechtsangleichende Hormontherapie bei Kindern und Jugendlichen mit Genderdysphorie

Date Run: 05/09/2023 19:28:23

ID	Search	Hits
#1	MeSH descriptor: [Gender Dysphoria] this term only	16
#2	MeSH descriptor: [Gender Identity] this term only	304
#3	MeSH descriptor: [Sexual and Gender Disorders] this term only	2
#4	MeSH descriptor: [Transsexualism] this term only	40
#5	MeSH descriptor: [Transgender Persons] this term only	110
#6	MeSH descriptor: [Health Services for Transgender Persons] this term only	0
#7	MeSH descriptor: [Sex Reassignment Procedures] explode all trees	10
#8	(gender* near/3 (dysphori* or incongru* or identi* or disorder* or confus* or minorit* or queer*)):ti,ab,kw	1284
#9	(transgend* or transex* or transsex* or transfem* or transwom* or transma* or transmen* or transperson* or transpeopl*):ti,ab,kw	1525
#10	(trans or crossgender* or cross-gender* or crossex* or cross-sex* or genderqueer*):ti,ab,kw	5271
#11	((sex or gender*) near/3 (reassign* or chang* or transform* or transition*)):ti,ab,kw	708
#12	(male-to-female or m2f or female-to-male or f2m):ti,ab,kw	723
#13	#1 or #2 or #3 or #4 or #5 or #6 or #7 or #8 or #9 or #10 or #11 or #12	9022

- #14 MeSH descriptor: [Infant] explode all trees 41997
- #15 MeSH descriptor: [Infant Health] this term only 85
- #16 MeSH descriptor: [Infant Welfare] this term only 91
- #17 (premat\* or pre-matur\* or preterm\* or pre-term\* or infan\* or newborn\* or new-born\* or perinat\* or peri-nat\* or neonat\* or neo-nat\* or baby\* or babies or toddler\*):ti,ab,kw,so 110386
- #18 MeSH descriptor: [Child] explode all trees 78477
- #19 MeSH descriptor: [Child Behavior] explode all trees 2793
- #20 MeSH descriptor: [Child Health] this term only 317
- #21 MeSH descriptor: [Child Welfare] this term only 409
- #22 MeSH descriptor: [Minors] this term only 11
- #23 (child\* or minor or minors or boy\* or girl\* or kid or kids or young\*):ti,ab,kw,so 339284
- #24 MeSH descriptor: [Pediatrics] explode all trees 1179
- #25 (pediatric\* or paediatric\* or peadiatric\*):ti,ab,kw,so 71120
- #26 MeSH descriptor: [Adolescent] this term only 125806
- #27 MeSH descriptor: [Adolescent Behavior] this term only 1718
- #28 MeSH descriptor: [Adolescent Health] this term only 85
- #29 MeSH descriptor: [Puberty] this term only 403
- #30 (adolesc\* or pubescen\* or prepubescen\* or pre-pubescen\* or pubert\* or prepubert\* or pre-pubert\* or teen\* or preteen\* or pre-teen\* or juvenil\* or youth\* or under\*age\*):ti,ab,kw,so 169090
- #31 MeSH descriptor: [Schools] this term only 3275
- #32 MeSH descriptor: [Child Day Care Centers] this term only 303
- #33 MeSH descriptor: [Nurseries, Infant] explode all trees 13
- #34 MeSH descriptor: [Schools, Nursery] this term only 43
- #35 (pre-school\* or preschool\* or kindergar\* or daycare or day-care or nurser\* or school\* or pupil\* or student\*):ti,ab,kw,so 126022
- #36 (("eight" or "nine" or "ten" or "eleven" or "twelve" or "thirteen" or "fourteen" or "fifteen" or "sixteen" or "seventeen" or "eighteen" or "nineteen") near/2 (year or years or age or ages or aged):ti,ab 8029
- #37 (("8" or "9" or "10" or "11" or "12" or "13" or "14" or "15" or "16" or "17" or "18" or "19") near/2 (year or years or age or ages or aged):ti,ab 282975
- #38 #14 or #15 or #16 or #17 or #18 or #19 or #20 or #21 or #22 or #23 or #24 or #25 or #26 or #27 or #28 or #29 or #30 or #31 or #32 or #33 or #34 or #35 or #36 or #37 671575
- #39 #13 and #38 3689
- #40 (transchild\* or transyouth\* or transteen\* or transadoles\* or transgirl\* or transboy\*):ti,ab,kw 0
- #41 #39 or #40 3689
- #42 [mh ^"Gonadotropin-Releasing Hormone"] 1570
- #43 (pubert\* NEAR/3 block\*):ti,ab 1
- #44 ((gonadotrophin or gonadotropin) and releasing):ti,ab 2449

#45	(GnRH NEAR/2 analog*):ti,ab	561
#46	GnRH*:ti,ab	4528
#47	"GnRH agonist*":ti,ab	1690
#48	[mh ^"Triptorelin Pamoate"]	500
#49	triptorelin:ti,ab	558
#50	arvekap:ti,ab	4
#51	("AY 25650" or AY25650):ti,ab	0
#52	("BIM 21003" or BIM21003):ti,ab	0
#53	("BN 52014" or BN52014):ti,ab	0
#54	("CL 118532" or CL118532):ti,ab	0
#55	Debio:ti,ab	355
#56	diphereline:ti,ab	35
#57	moapar:ti,ab	0
#58	pamorelin:ti,ab	6
#59	trelstar:ti,ab	3
#60	triptodur:ti,ab	0
#61	("WY 42422" or WY42422):ti,ab	0
#62	("WY 42462" or WY42462):ti,ab	0
#63	gonapeptyl:ti,ab	13
#64	decapeptyl:ti,ab	168
#65	salvacyl:ti,ab	0
#66	[mh ^Buserelin]	305
#67	Buserelin:ti,ab	362
#68	bigonist:ti,ab	0
#69	("hoe 766" or hoe-766 or hoe766):ti,ab	11
#70	profact:ti,ab	1
#71	receptal:ti,ab	5
#72	suprecur:ti,ab	1
#73	suprefact:ti,ab	29
#74	tiloryth:ti,ab	0
#75	histrelin:ti,ab	11
#76	"LHRH-hydrogel implant":ti,ab	0
#77	("RL 0903" or RL0903):ti,ab	0
#78	("SPD 424" or SPD424):ti,ab	0
#79	goserelin:ti,ab	847



#80	[mh ^goserelin]	635	
#81	("ici 118630" or ici118630):ti,ab	7	
#82	("ZD-9393" or ZD9393):ti,ab	1	
#83	zoladex:ti,ab	335	
#84	leuprorelin:ti,ab	287	
#85	carcinil:ti,ab	0	
#86	enanton*:ti,ab	25	
#87	ginecrin:ti,ab	1	
#88	leuplin:ti,ab	8	
#89	[mh ^Leuprolide]	757	
#90	leuprolide:ti,ab	796	
#91	lucrin:ti,ab	26	
#92	lupron:ti,ab	89	
#93	provren:ti,ab	0	
#94	procrin:ti,ab	3	
#95	("tap 144" or tap144):ti,ab	25	
#96	(a-43818 or a43818):ti,ab	0	
#97	Trenantone:ti,ab	3	
#98	staladex:ti,ab	0	
#99	prostag:ti,ab	9	
#100	[mh ^Nafarelin]	82	
#101	nafarelin:ti,ab	119	
#102	("76932-56-4" or "76932564"):ti,ab	0	
#103	("76932-60-0" or "76932600"):ti,ab	2	
#104	("86220-42-0" or "86220420"):ti,ab	0	
#105	("rs 94991 298" or rs94991298):ti,ab	0	
#106	synarel:ti,ab	10	
#107	deslorelin:ti,ab	25	
#108	gonadorelin:ti,ab	16	
#109	("33515-09-2" or "33515092"):ti,ab	1	
#110	("51952-41-1" or "51952411"):ti,ab	0	
#111	("52699-48-6" or "52699486"):ti,ab	0	
#112	cetrorelix:ti,ab	243	
#113	cetrotide:ti,ab	138	
#114	("NS 75A" or NS75A):ti,ab	0	

#115	("NS 75B" or NS75B):ti,ab	0
#116	("SB 075" or SB075):ti,ab	0
#117	("SB 75" or SB75):ti,ab	11
#118	gonadoliberein:ti,ab	6
#119	kryptocur:ti,ab	1
#120	cetrorelix:ti,ab	243
#121	cetrotide:ti,ab	138
#122	antagon:ti,ab	13
#123	ganirelix:ti,ab	162
#124	("ORG 37462" or ORG37462):ti,ab	4
#125	orgalutran:ti,ab	52
#126	("RS 26306" or RS26306):ti,ab	0
#127	("AY 24031" or AY24031):ti,ab	0
#128	factrel:ti,ab	1
#129	fertagyl:ti,ab	1
#130	lutrelef:ti,ab	0
#131	lutrepulse:ti,ab	2
#132	relefact:ti,ab	3
#133	fertiral:ti,ab	0
#134	(hoe471 or "hoe 471"):ti,ab	3
#135	relisorm:ti,ab	0
#136	cystorelin:ti,ab	0
#137	dirigestran:ti,ab	0
#138	{or #42-#137}	8053
#139	#41 AND #138	35
#140	#139 with Cochrane Library publication date Between Jul 2020 and Sep 2023, in Cochrane Reviews	0
#141	#139	35
#142	"conference":pt or (clinicaltrials or trialsearch):so	705621
#143	#141 NOT #142	10
#144	#143 with Publication Year from 2020 to 2023, in Trials	0

## **PSYCINFO**

Search Name: Geschlechtsangleichende Hormontherapie bei Kindern und Jugendlichen mit Genderdysphorie

Date Run: 06/09/2023 10:23:05

#	Query	Limiters/Expanders	Last Run Via	Results
S122	S28 AND S120	Expanders - Apply equivalent subjects Narrow by Language: - english Search modes - Find all my search terms	Interface - EBSCOhost Research Databases Search Screen - Advanced Search Database - APA PsycInfo	63
S121	S28 AND S120	Expanders - Apply equivalent subjects Search modes - Find all my search terms	Interface - EBSCOhost Research Databases Search Screen - Advanced Search Database - APA PsycInfo	65
S120	S29 OR S30 OR S31 OR S32 OR S33 OR S34 OR S35 OR S36 OR S37 OR S38 OR S39 OR S40 OR S41 OR S42 OR S43 OR S44 OR S45 OR S46 OR S47 OR S48 OR S49 OR S50 OR S51 OR S52 OR S53 OR S54 OR S55 OR S56 OR S57 OR S58 OR S59 OR S60 OR S61 OR S62 OR S63 OR S64 OR S65 OR S66 OR S67 OR S68 OR S69 OR S70 OR S71 OR S72 OR S73 OR S74 OR S75 OR S76 OR S77 OR S78 OR S79 OR S80 OR S81 OR S82 OR S83 OR S84 OR S85 OR S86 OR S87 OR S88 OR S89 OR S90 OR S91 OR S92 OR S93 OR S94 OR S95 OR S96 OR S97 OR S98 OR S99 OR S100 OR S101 OR S102 OR S103 OR S104 OR S105 OR S106 OR S107 OR S108 OR S109 OR S110 OR S111 OR S112 OR S113 OR S114 OR S115 OR S116 OR S117 OR S118 OR S119	Expanders - Apply equivalent subjects Search modes - Find all my search terms	Interface - EBSCOhost Research Databases Search Screen - Advanced Search Database - APA PsycInfo	198
S119	dirigestran	Limiters - Published Date: 20200701-20230931 Expanders - Apply equivalent subjects Search modes - Boolean/Phrase	Interface - EBSCOhost Research Databases Search Screen - Advanced Search Database - APA PsycInfo	0
S118	cystorelin	Limiters - Published Date: 20200701-20230931 Expanders - Apply equivalent	Interface - EBSCOhost Research Databases	0

	subjects Search modes - Boolean/Phrase	Search Screen - Advanced Search Database - APA PsycInfo	
S117 relisorm	Limiters - Published Date: 20200701-20230931 Expanders - Apply equivalent subjects Search modes - Boolean/Phrase	Interface - EBSCOhost Research Databases Search Screen - Advanced Search Database - APA PsycInfo	0
S116 (hoe471 or "hoe 471")	Limiters - Published Date: 20200701-20230931 Expanders - Apply equivalent subjects Search modes - Boolean/Phrase	Interface - EBSCOhost Research Databases Search Screen - Advanced Search Database - APA PsycInfo	0
S115 fertiral	Limiters - Published Date: 20200701-20230931 Expanders - Apply equivalent subjects Search modes - Boolean/Phrase	Interface - EBSCOhost Research Databases Search Screen - Advanced Search Database - APA PsycInfo	0
S114 relefact	Limiters - Published Date: 20200701-20230931 Expanders - Apply equivalent subjects Search modes - Boolean/Phrase	Interface - EBSCOhost Research Databases Search Screen - Advanced Search Database - APA PsycInfo	0
S113 lutrepulse	Limiters - Published Date: 20200701-20230931 Expanders - Apply equivalent subjects Search modes - Boolean/Phrase	Interface - EBSCOhost Research Databases Search Screen - Advanced Search Database - APA PsycInfo	0
S112 lutrelef	Limiters - Published Date: 20200701-20230931 Expanders - Apply equivalent subjects Search modes - Boolean/Phrase	Interface - EBSCOhost Research Databases Search Screen - Advanced	0

			Search Database - APA PsycInfo	
S111	fertagyl	Limiters - Published Date: 20200701-20230931 Expanders - Apply equivalent subjects Search modes - Boolean/Phrase	Interface - EBSCOhost Research Databases Search Screen - Advanced Search Database - APA PsycInfo	0
S110	factrel	Limiters - Published Date: 20200701-20230931 Expanders - Apply equivalent subjects Search modes - Boolean/Phrase	Interface - EBSCOhost Research Databases Search Screen - Advanced Search Database - APA PsycInfo	0
S109	("AY 24031" or AY24031)	Limiters - Published Date: 20200701-20230931 Expanders - Apply equivalent subjects Search modes - Boolean/Phrase	Interface - EBSCOhost Research Databases Search Screen - Advanced Search Database - APA PsycInfo	0
S108	("RS 26306" or RS26306)	Limiters - Published Date: 20200701-20230931 Expanders - Apply equivalent subjects Search modes - Boolean/Phrase	Interface - EBSCOhost Research Databases Search Screen - Advanced Search Database - APA PsycInfo	0
S107	orgalutran	Limiters - Published Date: 20200701-20230931 Expanders - Apply equivalent subjects Search modes - Boolean/Phrase	Interface - EBSCOhost Research Databases Search Screen - Advanced Search Database - APA PsycInfo	0
S106	("ORG 37462" or ORG37462)	Limiters - Published Date: 20200701-20230931 Expanders - Apply equivalent subjects Search modes - Boolean/Phrase	Interface - EBSCOhost Research Databases Search Screen - Advanced Search	0

S105	ganirelix	Limiters - Published Date: 20200701-20230931 Expanders - Apply equivalent subjects Search modes - Boolean/Phrase	Database - APA PsycInfo Interface - EBSCOhost Research Databases Search Screen - Advanced Search Database - APA PsycInfo	0
S104	antagon	Limiters - Published Date: 20200701-20230931 Expanders - Apply equivalent subjects Search modes - Boolean/Phrase	Interface - EBSCOhost Research Databases Search Screen - Advanced Search Database - APA PsycInfo	0
S103	cetrotide	Limiters - Published Date: 20200701-20230931 Expanders - Apply equivalent subjects Search modes - Boolean/Phrase	Interface - EBSCOhost Research Databases Search Screen - Advanced Search Database - APA PsycInfo	0
S102	cetrorelix	Limiters - Published Date: 20200701-20230931 Expanders - Apply equivalent subjects Search modes - Boolean/Phrase	Interface - EBSCOhost Research Databases Search Screen - Advanced Search Database - APA PsycInfo	0
S101	kryptocur	Limiters - Published Date: 20200701-20230931 Expanders - Apply equivalent subjects Search modes - Boolean/Phrase	Interface - EBSCOhost Research Databases Search Screen - Advanced Search Database - APA PsycInfo	0
S100	gonadoliberin	Limiters - Published Date: 20200701-20230931 Expanders - Apply equivalent subjects Search modes - Boolean/Phrase	Interface - EBSCOhost Research Databases Search Screen - Advanced Search Database - APA PsycInfo	0

S99	("SB 75" or SB75)	Limiters - Published Date: 20200701-20230931 Expanders - Apply equivalent subjects Search modes - Boolean/Phrase	Interface - EBSCOhost Research Databases Search Screen - Advanced Search Database - APA PsycInfo	0
S98	("SB 075" or SB075)	Limiters - Published Date: 20200701-20230931 Expanders - Apply equivalent subjects Search modes - Boolean/Phrase	Interface - EBSCOhost Research Databases Search Screen - Advanced Search Database - APA PsycInfo	0
S97	("NS 75B" or NS75B)	Limiters - Published Date: 20200701-20230931 Expanders - Apply equivalent subjects Search modes - Boolean/Phrase	Interface - EBSCOhost Research Databases Search Screen - Advanced Search Database - APA PsycInfo	0
S96	("NS 75A" or NS75A)	Limiters - Published Date: 20200701-20230931 Expanders - Apply equivalent subjects Search modes - Boolean/Phrase	Interface - EBSCOhost Research Databases Search Screen - Advanced Search Database - APA PsycInfo	0
S95	cetrotide	Limiters - Published Date: 20200701-20230931 Expanders - Apply equivalent subjects Search modes - Boolean/Phrase	Interface - EBSCOhost Research Databases Search Screen - Advanced Search Database - APA PsycInfo	0
S94	cetrorelix	Limiters - Published Date: 20200701-20230931 Expanders - Apply equivalent subjects Search modes - Boolean/Phrase	Interface - EBSCOhost Research Databases Search Screen - Advanced Search Database - APA PsycInfo	0
S93	("52699-48-6" or "52699486")	Limiters - Published Date: 20200701-20230931	Interface - EBSCOhost	0

		Expanders - Apply equivalent subjects Search modes - Boolean/Phrase	Research Databases Search Screen - Advanced Search Database - APA PsycInfo	
S92	("51952-41-1" or "51952411")	Limiters - Published Date: 20200701-20230931 Expanders - Apply equivalent subjects Search modes - Boolean/Phrase	Interface - EBSCOhost Research Databases Search Screen - Advanced Search Database - APA PsycInfo	0
S91	("33515-09-2" or "33515092")	Limiters - Published Date: 20200701-20230931 Expanders - Apply equivalent subjects Search modes - Boolean/Phrase	Interface - EBSCOhost Research Databases Search Screen - Advanced Search Database - APA PsycInfo	0
S90	gonadorelin	Limiters - Published Date: 20200701-20230931 Expanders - Apply equivalent subjects Search modes - Boolean/Phrase	Interface - EBSCOhost Research Databases Search Screen - Advanced Search Database - APA PsycInfo	0
S89	deslorelin	Limiters - Published Date: 20200701-20230931 Expanders - Apply equivalent subjects Search modes - Boolean/Phrase	Interface - EBSCOhost Research Databases Search Screen - Advanced Search Database - APA PsycInfo	2
S88	synarel	Limiters - Published Date: 20200701-20230931 Expanders - Apply equivalent subjects Search modes - Boolean/Phrase	Interface - EBSCOhost Research Databases Search Screen - Advanced Search Database - APA PsycInfo	0
S87	("rs 94991 298" or rs94991298)	Limiters - Published Date: 20200701-20230931 Expanders - Apply equivalent	Interface - EBSCOhost Research Databases	0



		subjects Search modes - Boolean/Phrase	Search Screen - Advanced Search Database - APA PsycInfo	
S86	("86220-42-0" or "86220420")	Limiters - Published Date: 20200701-20230931 Expanders - Apply equivalent subjects Search modes - Boolean/Phrase	Interface - EBSCOhost Research Databases Search Screen - Advanced Search Database - APA PsycInfo	0
S85	("76932-60-0" or "76932600")	Limiters - Published Date: 20200701-20230931 Expanders - Apply equivalent subjects Search modes - Boolean/Phrase	Interface - EBSCOhost Research Databases Search Screen - Advanced Search Database - APA PsycInfo	0
S84	("76932-56-4" or "76932564")	Limiters - Published Date: 20200701-20230931 Expanders - Apply equivalent subjects Search modes - Boolean/Phrase	Interface - EBSCOhost Research Databases Search Screen - Advanced Search Database - APA PsycInfo	0
S83	nafarelin	Limiters - Published Date: 20200701-20230931 Expanders - Apply equivalent subjects Search modes - Boolean/Phrase	Interface - EBSCOhost Research Databases Search Screen - Advanced Search Database - APA PsycInfo	0
S82	prostag	Limiters - Published Date: 20200701-20230931 Expanders - Apply equivalent subjects Search modes - Boolean/Phrase	Interface - EBSCOhost Research Databases Search Screen - Advanced Search Database - APA PsycInfo	0
S81	staladex	Limiters - Published Date: 20200701-20230931 Expanders - Apply equivalent subjects Search modes - Boolean/Phrase	Interface - EBSCOhost Research Databases Search Screen - Advanced	0

			Search Database - APA PsycInfo	
S80	Trenantone	Limiters - Published Date: 20200701-20230931 Expanders - Apply equivalent subjects Search modes - Boolean/Phrase	Interface - EBSCOhost Research Databases Search Screen - Advanced Search Database - APA PsycInfo	0
S79	(a-43818 or a43818)	Limiters - Published Date: 20200701-20230931 Expanders - Apply equivalent subjects Search modes - Boolean/Phrase	Interface - EBSCOhost Research Databases Search Screen - Advanced Search Database - APA PsycInfo	0
S78	("tap 144" or tap144)	Limiters - Published Date: 20200701-20230931 Expanders - Apply equivalent subjects Search modes - Boolean/Phrase	Interface - EBSCOhost Research Databases Search Screen - Advanced Search Database - APA PsycInfo	0
S77	procrin	Limiters - Published Date: 20200701-20230931 Expanders - Apply equivalent subjects Search modes - Boolean/Phrase	Interface - EBSCOhost Research Databases Search Screen - Advanced Search Database - APA PsycInfo	0
S76	provren	Limiters - Published Date: 20200701-20230931 Expanders - Apply equivalent subjects Search modes - Boolean/Phrase	Interface - EBSCOhost Research Databases Search Screen - Advanced Search Database - APA PsycInfo	0
S75	lupron	Limiters - Published Date: 20200701-20230931 Expanders - Apply equivalent subjects Search modes - Boolean/Phrase	Interface - EBSCOhost Research Databases Search Screen - Advanced Search	3

S74	lucrin	<p>Limiters - Published Date: 20200701-20230931</p> <p>Expanders - Apply equivalent subjects</p> <p>Search modes - Boolean/Phrase</p>	<p>Database - APA PsycInfo</p> <p>Interface - EBSCOhost Research Databases Search Screen - Advanced Search Database - APA PsycInfo</p>	0
S73	leuprolide	<p>Limiters - Published Date: 20200701-20230931</p> <p>Expanders - Apply equivalent subjects</p> <p>Search modes - Boolean/Phrase</p>	<p>Interface - EBSCOhost Research Databases Search Screen - Advanced Search Database - APA PsycInfo</p>	6
S72	leuplin	<p>Limiters - Published Date: 20200701-20230931</p> <p>Expanders - Apply equivalent subjects</p> <p>Search modes - Boolean/Phrase</p>	<p>Interface - EBSCOhost Research Databases Search Screen - Advanced Search Database - APA PsycInfo</p>	0
S71	ginecrin	<p>Limiters - Published Date: 20200701-20230931</p> <p>Expanders - Apply equivalent subjects</p> <p>Search modes - Boolean/Phrase</p>	<p>Interface - EBSCOhost Research Databases Search Screen - Advanced Search Database - APA PsycInfo</p>	0
S70	enanton*	<p>Limiters - Published Date: 20200701-20230931</p> <p>Expanders - Apply equivalent subjects</p> <p>Search modes - Boolean/Phrase</p>	<p>Interface - EBSCOhost Research Databases Search Screen - Advanced Search Database - APA PsycInfo</p>	0
S69	carcinil	<p>Limiters - Published Date: 20200701-20230931</p> <p>Expanders - Apply equivalent subjects</p> <p>Search modes - Boolean/Phrase</p>	<p>Interface - EBSCOhost Research Databases Search Screen - Advanced Search Database - APA PsycInfo</p>	0

S68	leuprorelin	Limiters - Published Date: 20200701-20230931 Expanders - Apply equivalent subjects Search modes - Boolean/Phrase	Interface - EBSCOhost Research Databases Search Screen - Advanced Search Database - APA PsycInfo	0
S67	zoladex	Limiters - Published Date: 20200701-20230931 Expanders - Apply equivalent subjects Search modes - Boolean/Phrase	Interface - EBSCOhost Research Databases Search Screen - Advanced Search Database - APA PsycInfo	0
S66	("ZD-9393" or ZD9393)	Limiters - Published Date: 20200701-20230931 Expanders - Apply equivalent subjects Search modes - Boolean/Phrase	Interface - EBSCOhost Research Databases Search Screen - Advanced Search Database - APA PsycInfo	0
S65	("ici 118630" or ici118630)	Limiters - Published Date: 20200701-20230931 Expanders - Apply equivalent subjects Search modes - Boolean/Phrase	Interface - EBSCOhost Research Databases Search Screen - Advanced Search Database - APA PsycInfo	0
S64	goserelin	Limiters - Published Date: 20200701-20230931 Expanders - Apply equivalent subjects Search modes - Boolean/Phrase	Interface - EBSCOhost Research Databases Search Screen - Advanced Search Database - APA PsycInfo	2
S63	("SPD 424" or SPD424)	Limiters - Published Date: 20200701-20230931 Expanders - Apply equivalent subjects Search modes - Boolean/Phrase	Interface - EBSCOhost Research Databases Search Screen - Advanced Search Database - APA PsycInfo	0
S62	("RL 0903" or RL0903)	Limiters - Published Date: 20200701-20230931	Interface - EBSCOhost	0

		Expanders - Apply equivalent subjects Search modes - Boolean/Phrase	Research Databases Search Screen - Advanced Search Database - APA PsycInfo	
S61	"LHRH-hydrogel implant"	Limiters - Published Date: 20200701-20230931 Expanders - Apply equivalent subjects Search modes - Boolean/Phrase	Interface - EBSCOhost Research Databases Search Screen - Advanced Search Database - APA PsycInfo	0
S60	histrelin	Limiters - Published Date: 20200701-20230931 Expanders - Apply equivalent subjects Search modes - Boolean/Phrase	Interface - EBSCOhost Research Databases Search Screen - Advanced Search Database - APA PsycInfo	1
S59	tiloryth	Limiters - Published Date: 20200701-20230931 Expanders - Apply equivalent subjects Search modes - Boolean/Phrase	Interface - EBSCOhost Research Databases Search Screen - Advanced Search Database - APA PsycInfo	0
S58	suprefact	Limiters - Published Date: 20200701-20230931 Expanders - Apply equivalent subjects Search modes - Boolean/Phrase	Interface - EBSCOhost Research Databases Search Screen - Advanced Search Database - APA PsycInfo	0
S57	suprecur	Limiters - Published Date: 20200701-20230931 Expanders - Apply equivalent subjects Search modes - Boolean/Phrase	Interface - EBSCOhost Research Databases Search Screen - Advanced Search Database - APA PsycInfo	0
S56	receptal	Limiters - Published Date: 20200701-20230931 Expanders - Apply equivalent	Interface - EBSCOhost Research Databases	0

		subjects Search modes - Boolean/Phrase	Search Screen - Advanced Search Database - APA PsycInfo	
S55	profact	Limiters - Published Date: 20200701-20230931 Expanders - Apply equivalent subjects Search modes - Boolean/Phrase	Interface - EBSCOhost Research Databases Search Screen - Advanced Search Database - APA PsycInfo	0
S54	("hoe 766" or hoe-766 or hoe766)	Limiters - Published Date: 20200701-20230931 Expanders - Apply equivalent subjects Search modes - Boolean/Phrase	Interface - EBSCOhost Research Databases Search Screen - Advanced Search Database - APA PsycInfo	0
S53	bigonist	Limiters - Published Date: 20200701-20230931 Expanders - Apply equivalent subjects Search modes - Boolean/Phrase	Interface - EBSCOhost Research Databases Search Screen - Advanced Search Database - APA PsycInfo	0
S52	buserelin	Limiters - Published Date: 20200701-20230931 Expanders - Apply equivalent subjects Search modes - Boolean/Phrase	Interface - EBSCOhost Research Databases Search Screen - Advanced Search Database - APA PsycInfo	0
S51	salvacyl	Limiters - Published Date: 20200701-20230931 Expanders - Apply equivalent subjects Search modes - Boolean/Phrase	Interface - EBSCOhost Research Databases Search Screen - Advanced Search Database - APA PsycInfo	0
S50	decapeptyl	Limiters - Published Date: 20200701-20230931 Expanders - Apply equivalent subjects Search modes - Boolean/Phrase	Interface - EBSCOhost Research Databases Search Screen - Advanced	0

			Search Database - APA PsycInfo	
S49	gonapeptyl	Limiters - Published Date: 20200701-20230931 Expanders - Apply equivalent subjects Search modes - Boolean/Phrase	Interface - EBSCOhost Research Databases Search Screen - Advanced Search Database - APA PsycInfo	0
S48	("WY 42462" or WY42462)	Limiters - Published Date: 20200701-20230931 Expanders - Apply equivalent subjects Search modes - Boolean/Phrase	Interface - EBSCOhost Research Databases Search Screen - Advanced Search Database - APA PsycInfo	0
S47	("WY 42422" or WY42422)	Limiters - Published Date: 20200701-20230931 Expanders - Apply equivalent subjects Search modes - Boolean/Phrase	Interface - EBSCOhost Research Databases Search Screen - Advanced Search Database - APA PsycInfo	0
S46	triptodur	Limiters - Published Date: 20200701-20230931 Expanders - Apply equivalent subjects Search modes - Boolean/Phrase	Interface - EBSCOhost Research Databases Search Screen - Advanced Search Database - APA PsycInfo	0
S45	trelstar	Limiters - Published Date: 20200701-20230931 Expanders - Apply equivalent subjects Search modes - Boolean/Phrase	Interface - EBSCOhost Research Databases Search Screen - Advanced Search Database - APA PsycInfo	0
S44	pamorelin	Limiters - Published Date: 20200701-20230931 Expanders - Apply equivalent subjects Search modes - Boolean/Phrase	Interface - EBSCOhost Research Databases Search Screen - Advanced Search	0

S43	moapar	Limiters - Published Date: 20200701-20230931 Expanders - Apply equivalent subjects Search modes - Boolean/Phrase	Database - APA PsycInfo Interface - EBSCOhost Research Databases Search Screen - Advanced Search Database - APA PsycInfo	0
S42	diphereline	Limiters - Published Date: 20200701-20230931 Expanders - Apply equivalent subjects Search modes - Boolean/Phrase	Interface - EBSCOhost Research Databases Search Screen - Advanced Search Database - APA PsycInfo	0
S41	Debio	Limiters - Published Date: 20200701-20230931 Expanders - Apply equivalent subjects Search modes - Boolean/Phrase	Interface - EBSCOhost Research Databases Search Screen - Advanced Search Database - APA PsycInfo	3
S40	("CL 118532" or CL118532)	Limiters - Published Date: 20200701-20230931 Expanders - Apply equivalent subjects Search modes - Boolean/Phrase	Interface - EBSCOhost Research Databases Search Screen - Advanced Search Database - APA PsycInfo	0
S39	("BN 52014" or BN52014)	Limiters - Published Date: 20200701-20230931 Expanders - Apply equivalent subjects Search modes - Boolean/Phrase	Interface - EBSCOhost Research Databases Search Screen - Advanced Search Database - APA PsycInfo	0
S38	("BIM 21003" or BIM21003)	Limiters - Published Date: 20200701-20230931 Expanders - Apply equivalent subjects Search modes - Boolean/Phrase	Interface - EBSCOhost Research Databases Search Screen - Advanced Search Database - APA PsycInfo	0



S37	("AY 25650" or AY25650)	Limiters - Published Date: 20200701-20230931 Expanders - Apply equivalent subjects Search modes - Boolean/Phrase	Interface - EBSCOhost Research Databases Search Screen - Advanced Search Database - APA PsycInfo	0
S36	arvekap	Limiters - Published Date: 20200701-20230931 Expanders - Apply equivalent subjects Search modes - Boolean/Phrase	Interface - EBSCOhost Research Databases Search Screen - Advanced Search Database - APA PsycInfo	0
S35	triptorelin	Limiters - Published Date: 20200701-20230931 Expanders - Apply equivalent subjects Search modes - Boolean/Phrase	Interface - EBSCOhost Research Databases Search Screen - Advanced Search Database - APA PsycInfo	1
S34	"GnRH agonist*"	Limiters - Published Date: 20200701-20230931 Expanders - Apply equivalent subjects Search modes - Boolean/Phrase	Interface - EBSCOhost Research Databases Search Screen - Advanced Search Database - APA PsycInfo	11
S33	GnRH*	Limiters - Published Date: 20200701-20230931 Expanders - Apply equivalent subjects Search modes - Boolean/Phrase	Interface - EBSCOhost Research Databases Search Screen - Advanced Search Database - APA PsycInfo	123
S32	(GnRH N2 analog*)	Limiters - Published Date: 20200701-20230931 Expanders - Apply equivalent subjects Search modes - Boolean/Phrase	Interface - EBSCOhost Research Databases Search Screen - Advanced Search Database - APA PsycInfo	6
S31	((gonadotrophin or gonadotropin) and releasing)	Limiters - Published Date: 20200701-20230931	Interface - EBSCOhost	115

		Expanders - Apply equivalent subjects Search modes - Boolean/Phrase	Research Databases Search Screen - Advanced Search Database - APA PsycInfo	
S30	(pubert* N3 block*)	Limiters - Published Date: 20200701-20230931 Expanders - Apply equivalent subjects Search modes - Boolean/Phrase	Interface - EBSCOhost Research Databases Search Screen - Advanced Search Database - APA PsycInfo	37
S29	Gonadotropic Hormones/exp	Limiters - Published Date: 20200701-20230931 Expanders - Apply equivalent subjects Search modes - SmartText Searching	Interface - EBSCOhost Research Databases Search Screen - Advanced Search Database - APA PsycInfo	80
S28	S26 OR S27	Limiters - Published Date: 20200701-20230931 Expanders - Apply equivalent subjects Search modes - Boolean/Phrase	Interface - EBSCOhost Research Databases Search Screen - Advanced Search Database - APA PsycInfo	12,962
S27	(transchild* or transyouth* or transteen* or transadoles* or transgirl* or transboy*)	Limiters - Published Date: 20200701-20230931 Expanders - Apply equivalent subjects Search modes - Boolean/Phrase	Interface - EBSCOhost Research Databases Search Screen - Advanced Search Database - APA PsycInfo	4
S26	S11 AND S25	Expanders - Apply equivalent subjects Search modes - Find all my search terms	Interface - EBSCOhost Research Databases Search Screen - Advanced Search Database - APA PsycInfo	12,965
S25	S12 OR S13 OR S14 OR S15 OR S16 OR S17 OR S18 OR S19 OR S20 OR S21 OR S22 OR S23 OR S24	Expanders - Apply equivalent subjects Search modes - Find all my search terms	Interface - EBSCOhost Research Databases	319,700

			Search Screen - Advanced Search Database - APA PsycInfo	
S24	((("8" or "9" or "10" or "11" or "12" or "13" or "14" or "15" or "16" or "17" or "18" or "19") N2 (year or years or age or ages or aged))	Limiters - Published Date: 20200701-20230931 Expanders - Apply equivalent subjects Search modes - Boolean/Phrase	Interface - EBSCOhost Research Databases Search Screen - Advanced Search Database - APA PsycInfo	24,239
S23	((("eight" or "nine" or "ten" or "eleven" or "twelve" or "thirteen" or "fourteen" or "fifteen" or "sixteen" or "seventeen" or "eighteen" or "nineteen") N2 (year or years or age or ages or aged))	Limiters - Published Date: 20200701-20230931 Expanders - Apply equivalent subjects Search modes - Boolean/Phrase	Interface - EBSCOhost Research Databases Search Screen - Advanced Search Database - APA PsycInfo	3,040
S22	(pre-school* or preschool* or kindergar* or daycare or day-care or nurser* or school* or pupil* or student*)	Limiters - Published Date: 20200701-20230931 Expanders - Apply equivalent subjects Search modes - Boolean/Phrase	Interface - EBSCOhost Research Databases Search Screen - Advanced Search Database - APA PsycInfo	233,196
S21	Child Day Care/ or Nursery Schools/	Limiters - Published Date: 20200701-20230931 Expanders - Apply equivalent subjects Search modes - Boolean/Phrase	Interface - EBSCOhost Research Databases Search Screen - Advanced Search Database - APA PsycInfo	908
S20	Schools/	Limiters - Published Date: 20200701-20230931 Expanders - Apply equivalent subjects Search modes - Boolean/Phrase	Interface - EBSCOhost Research Databases Search Screen - Advanced Search Database - APA PsycInfo	205,199
S19	(adolescen* or pubescen* or prepubescen* or pre-pubescen* or pubert* or prepubert* or pre-pubert* or teen* or preteen* or pre-teen* or juvenil* or youth* or under*age*)	Limiters - Published Date: 20200701-20230931 Expanders - Apply equivalent subjects Search modes - Boolean/Phrase	Interface - EBSCOhost Research Databases Search Screen - Advanced	62,778

			Search Database - APA PsycInfo	
S18	Puberty/	Limiters - Published Date: 20200701-20230931 Expanders - Apply equivalent subjects Search modes - Boolean/Phrase	Interface - EBSCOhost Research Databases Search Screen - Advanced Search Database - APA PsycInfo	725
S17	Adolescent Psychiatry/ or Adolescent Behavior/ or Adolescent Development/ or Adolescent Psychology/ or Adolescent Characteristics/ or Adolescent Health/	Limiters - Published Date: 20200701-20230931 Expanders - Apply equivalent subjects Search modes - Boolean/Phrase	Interface - EBSCOhost Research Databases Search Screen - Advanced Search Database - APA PsycInfo	22,433
S16	(pediatric* or paediatric* or peadiatric*)	Limiters - Published Date: 20200701-20230931 Expanders - Apply equivalent subjects Search modes - Boolean/Phrase	Interface - EBSCOhost Research Databases Search Screen - Advanced Search Database - APA PsycInfo	15,905
S15	(child* or minor or minors or boy* or girl* or kid or kids or young*)	Limiters - Published Date: 20200701-20230931 Expanders - Apply equivalent subjects Search modes - Boolean/Phrase	Interface - EBSCOhost Research Databases Search Screen - Advanced Search Database - APA PsycInfo	140,569
S14	Child Characteristics/ or Child Behavior/exp or Child Psychology/ or Child Welfare/exp or Child Psychiatry/	Limiters - Published Date: 20200701-20230931 Expanders - Apply equivalent subjects Search modes - Boolean/Phrase	Interface - EBSCOhost Research Databases Search Screen - Advanced Search Database - APA PsycInfo	18,696
S13	(premat* or pre-matur* or preterm* or pre-term* or infan* or newborn* or new-born* or perinat* or peri-nat* or neonat* or neo-nat* or baby* or babies or toddler*)	Limiters - Published Date: 20200701-20230931 Expanders - Apply equivalent subjects Search modes - Boolean/Phrase	Interface - EBSCOhost Research Databases Search Screen - Advanced Search	19,743

			Database - APA PsycInfo	
S12	Infant Development/exp	Limiters - Published Date: 20200701-20230931 Expanders - Apply equivalent subjects Search modes - SmartText Searching	Interface - EBSCOhost Research Databases Search Screen - Advanced Search Database - APA PsycInfo	4,773
S11	S1 OR S2 OR S3 OR S4 OR S5 OR S6 OR S7 OR S8 OR S9 OR S10	Expanders - Apply equivalent subjects Search modes - Find all my search terms	Interface - EBSCOhost Research Databases Search Screen - Advanced Search Database - APA PsycInfo	19,880
S10	(male-to-female or m2f or female- to-male or f2m)	Limiters - Published Date: 20200701-20230931 Expanders - Apply equivalent subjects Search modes - Boolean/Phrase	Interface - EBSCOhost Research Databases Search Screen - Advanced Search Database - APA PsycInfo	8,925
S9	((sex or gender*) N3 (reassign* or chang* or transform* or transition*))	Limiters - Published Date: 20200701-20230931 Expanders - Apply equivalent subjects Search modes - Boolean/Phrase	Interface - EBSCOhost Research Databases Search Screen - Advanced Search Database - APA PsycInfo	1,333
S8	(trans or crossgender* or cross- gender* or crossex* or cross-sex* or genderqueer*)	Limiters - Published Date: 20200701-20230931 Expanders - Apply equivalent subjects Search modes - Boolean/Phrase	Interface - EBSCOhost Research Databases Search Screen - Advanced Search Database - APA PsycInfo	3,011
S7	(transgend* or transex* or transsex* or transfem* or transwom* or transma* or transmen* or transperson* or transpeopl*)	Limiters - Published Date: 20200701-20230931 Expanders - Apply equivalent subjects Search modes - Boolean/Phrase	Interface - EBSCOhost Research Databases Search Screen - Advanced Search Database - APA PsycInfo	4,125

*Beyond NICE: Aktualisierte Übersicht zur Evidenzlage der Pubertätsblockade und Hormongabe bei Minderjährigen mit Geschlechtsdysphorie - Zepf et al., 2024*

S6	gender* N3 (dysphori* or incongruen* or identi* or disorder* or confus* or minorit* or queer*)	Limiters - Published Date: 20200701-20230931 Expanders - Apply equivalent subjects Search modes - Boolean/Phrase	Interface - EBSCOhost Research Databases Search Screen - Advanced Search Database - APA PsycInfo	6,473
S5	Gender Reassignment/exp	Limiters - Published Date: 20200701-20230931 Expanders - Apply equivalent subjects Search modes - SmartText Searching	Interface - EBSCOhost Research Databases Search Screen - Advanced Search Database - APA PsycInfo	180
S4	Transgender/	Limiters - Published Date: 20200701-20230931 Expanders - Apply equivalent subjects Search modes - Boolean/Phrase	Interface - EBSCOhost Research Databases Search Screen - Advanced Search Database - APA PsycInfo	3,833
S3	Transsexualism/	Limiters - Published Date: 20200701-20230931 Expanders - Apply equivalent subjects Search modes - Boolean/Phrase	Interface - EBSCOhost Research Databases Search Screen - Advanced Search Database - APA PsycInfo	171
S2	Gender Identity/	Limiters - Published Date: 20200701-20230931 Expanders - Apply equivalent subjects Search modes - Boolean/Phrase	Interface - EBSCOhost Research Databases Search Screen - Advanced Search Database - APA PsycInfo	3,852
S1	Gender Dysphoria/	Limiters - Published Date: 20200701-20230931 Expanders - Apply equivalent subjects Search modes - Boolean/Phrase	Interface - EBSCOhost Research Databases Search Screen - Advanced Search Database - APA PsycInfo	420